

## SEPT1 Antibody

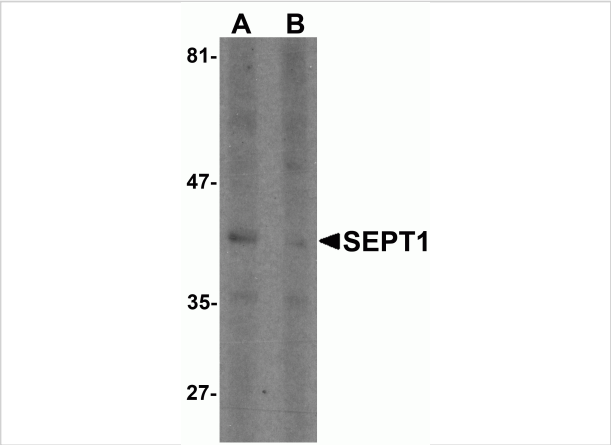
CATALOG NUMBER: 6903

### Specifications

Host Species	Rabbit
Species Reactivity	Human, Mouse, Rat
Homology	Predicted species reactivity based on immunogen sequence: Bovine: (100%)
Immunogen	SEPT1 antibody was raised against a 17 amino acid synthetic peptide near the carboxy terminus of human SEPT1. The immunogen is located within amino acids 300 - 350 of SEPT1.
Conjugate	Unconjugated
Tested Applications	ELISA, ICC, IF, WB
User Note	Optimal dilutions for each application to be determined by the researcher.
Specificity	At least two isoforms of SEPT1 are known to exist. This antibody is predicted to not cross-react with other Septin protein family members.

### Properties

Purification	SEPT1 Antibody is affinity chromatography purified via peptide column.
Clonality	Polyclonal
Isotype	IgG
Physical State	Liquid
Buffer	SEPT1 Antibody is supplied in PBS containing 0.02% sodium azide.
Concentration	1 mg/mL
Storage Conditions	SEPT1 antibody can be stored at 4°C for three months and -20°C, stable for up to one year. As with all antibodies care should be taken to avoid repeated freeze thaw cycles. Antibodies should not be exposed to prolonged high temperatures.



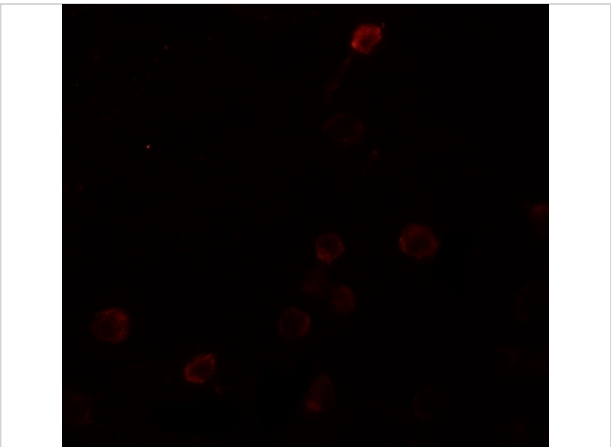
SEPT1 Antibody 1

Western blot analysis of SEPT1 in Raji cell lysate with SEPT1 antibody at 1 µg/ml in (A) the absence and (B) the presence of blocking peptide.



SEPT1 Antibody 2

Immunocytochemistry of SEPT1 in Raji cells with SEPT1 antibody at 5 µg/mL.



SEPT1 Antibody 3

Immunofluorescence of SEPT1 in Raji cells with SEPT1 antibody at 20 µg/mL.

Disclaimer

Disclaimer	Optimal dilutions/concentrations should be determined by the end user. The information provided is a guideline for product use. This product is for research use only.
------------	--

For research use only. For additional information, visit ProSci's [Terms and Conditions Page](#).