

## LEMD2 Antibody

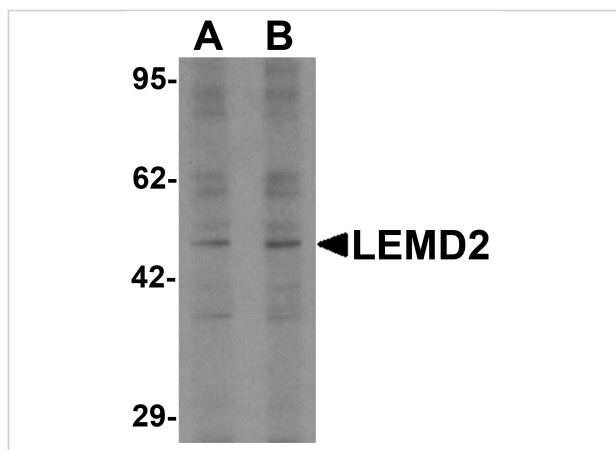
CATALOG NUMBER: 6891

### Specifications

Host Species	Rabbit
Species Reactivity	Human, Mouse
Immunogen	LEMD2 antibody was raised against a 16 amino acid synthetic peptide near the center of human LEMD2. The immunogen is located within amino acids 220 - 270 of LEMD2.
Conjugate	Unconjugated
Tested Applications	ELISA, ICC, IF, WB
User Note	Optimal dilutions for each application to be determined by the researcher.
Specificity	At least two isoforms of LEMD2 are known to exist; this antibody will detect only the longer isoform.

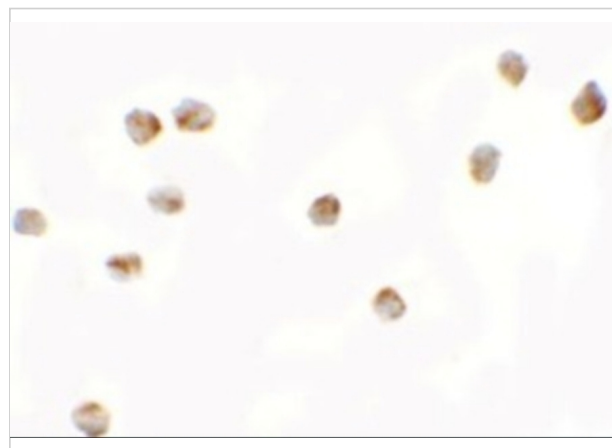
### Properties

Purification	LEMD2 Antibody is affinity chromatography purified via peptide column.
Clonality	Polyclonal
Isotype	IgG
Physical State	Liquid
Buffer	LEMD2 Antibody is supplied in PBS containing 0.02% sodium azide.
Concentration	1 mg/mL
Storage Conditions	LEMD2 antibody can be stored at 4°C for three months and -20°C, stable for up to one year. As with all antibodies care should be taken to avoid repeated freeze thaw cycles. Antibodies should not be exposed to prolonged high temperatures.



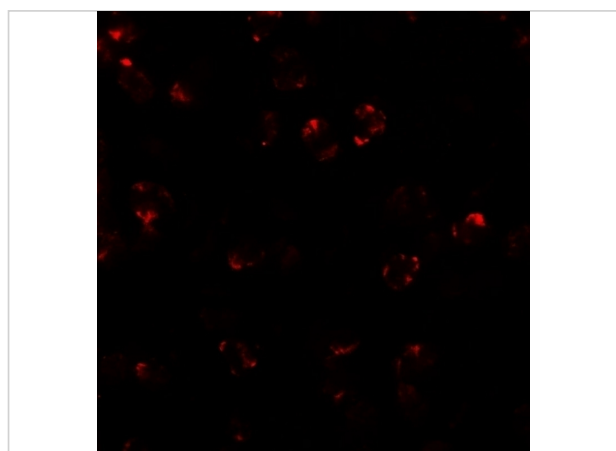
### LEMED2 Antibody 1

Western blot analysis of LEMD2 in 293 cell lysate with LEMD2 antibody at (A) 1 and (B) 2  $\mu\text{g/mL}$ .



### LEMED2 Antibody 2

Immunocytochemistry of LEMD2 in 3T3 cells with LEMD2 antibody at 2.5  $\mu\text{g/mL}$ .



### LEMED2 Antibody 3

Immunofluorescence of LEMD2 in 3T3 cells with LEMD2 antibody at 20  $\mu\text{g/mL}$ .

## Disclaimer

#### Disclaimer

Optimal dilutions/concentrations should be determined by the end user. The information provided is a guideline for product use. This product is for research use only.

For research use only. For additional information, visit ProSci's [Terms and Conditions Page](#).