

SDHAF1 Antibody

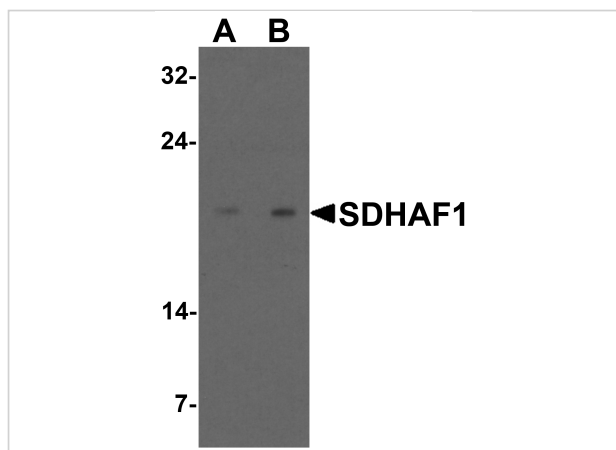
CATALOG NUMBER: 6879

Specifications

Host Species	Rabbit
Species Reactivity	Human, Mouse
Immunogen	SDHAF1 antibody was raised against an 18 amino acid synthetic peptide near the carboxy terminus of human SDHAF1. The immunogen is located within the last 50 amino acids of SDHAF1.
Conjugate	Unconjugated
Tested Applications	ELISA, ICC, IF, WB
User Note	Optimal dilutions for each application to be determined by the researcher.
Specificity	SDHAF1 antibody is predicted to not cross-react with other SDHAF protein family members.

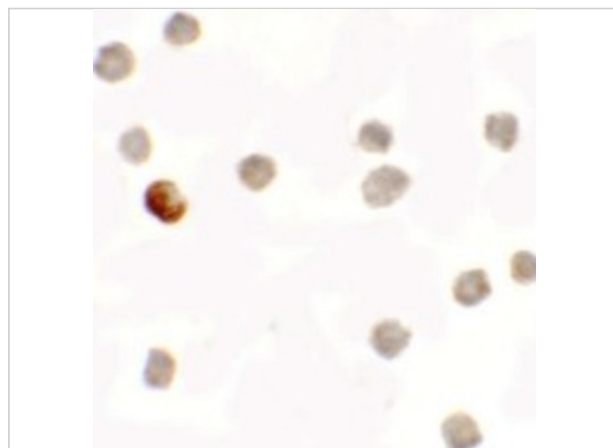
Properties

Purification	SDHAF1 Antibody is affinity chromatography purified via peptide column.
Clonality	Polyclonal
Isotype	IgG
Physical State	Liquid
Buffer	SDHAF1 Antibody is supplied in PBS containing 0.02% sodium azide.
Concentration	1 mg/mL
Storage Conditions	SDHAF1 antibody can be stored at 4°C for three months and -20°C, stable for up to one year. As with all antibodies care should be taken to avoid repeated freeze thaw cycles. Antibodies should not be exposed to prolonged high temperatures.



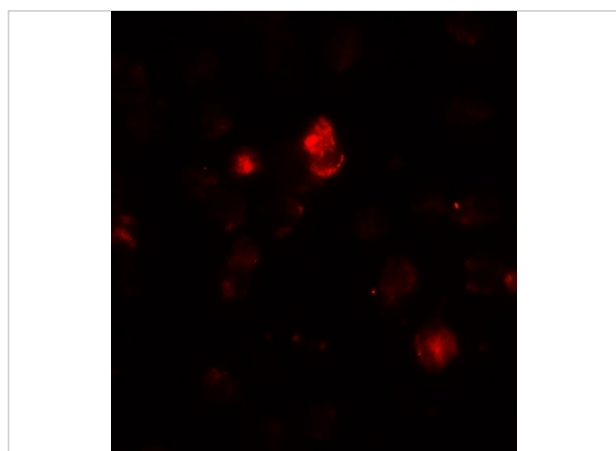
SDHAF1 Antibody 1

Western blot analysis of SDHAF1 in 3T3 cell lysate with SDHAF1 antibody at (A) 1 and (B) 2 µg/mL.



SDHAF1 Antibody 2

Immunocytochemistry of SDHAF1 in 3T3 cells with SDHAF1 antibody at 5 µg/mL.



SDHAF1 Antibody 3

Immunofluorescence of SDHAF1 in 3T3 cells with SDHAF1 antibody at 20 µg/mL.

Disclaimer

Disclaimer

Optimal dilutions/concentrations should be determined by the end user. The information provided is a guideline for product use. This product is for research use only.

For research use only. For additional information, visit ProSci's [Terms and Conditions Page](#).