

PTPRD Antibody

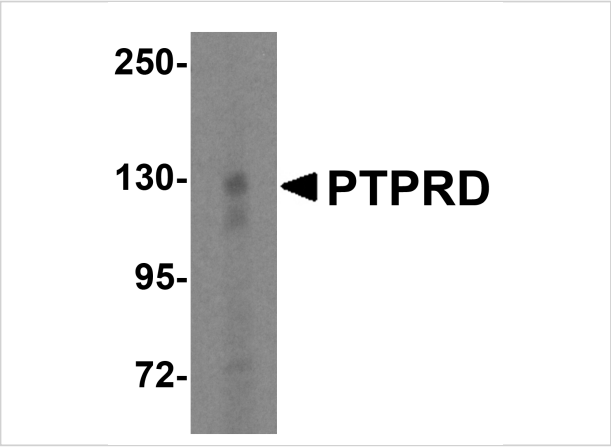
CATALOG NUMBER: 6875

Specifications

Host Species	Rabbit
Species Reactivity	Human
Homology	Predicted species reactivity based on immunogen sequence: Mouse: (100%)
Immunogen	PTPRD antibody was raised against an 18 amino acid synthetic peptide near the amino terminus of human PTPRD. The immunogen is located within the first 50 amino acids of PTPRD.
Conjugate	Unconjugated
Tested Applications	ELISA, WB
User Note	Optimal dilutions for each application to be determined by the researcher.
Specificity	PTPRD antibody is human specific. At least three alternatively spliced transcript variants encoding distinct isoforms have been observed. PTPRD cleavage products are often observed in vivo
Predicted Molecular Weight	Predicted: 165, 210 kDa (130 kDa for cleavage product) Observed: 130 kDa

Properties

Purification	PTPRD Antibody is affinity chromatography purified via peptide column.
Clonality	Polyclonal
Isotype	IgG
Physical State	Liquid
Buffer	PTPRD Antibody is supplied in PBS containing 0.02% sodium azide.
Concentration	1 mg/mL
Storage Conditions	PTPRD antibody can be stored at 4°C for three months and -20°C, stable for up to one year. As with all antibodies care should be taken to avoid repeated freeze thaw cycles. Antibodies should not be exposed to prolonged high temperatures.



PTPRD Antibody 1

Western blot analysis of PTPRD in HeLa cell lysate with PTPRD antibody at 1 µg/mL.

Disclaimer

Disclaimer	Optimal dilutions/concentrations should be determined by the end user. The information provided is a guideline for product use. This product is for research use only.
------------	--

For research use only. For additional information, visit ProSci's [Terms and Conditions Page](#).