

DBX2 Antibody

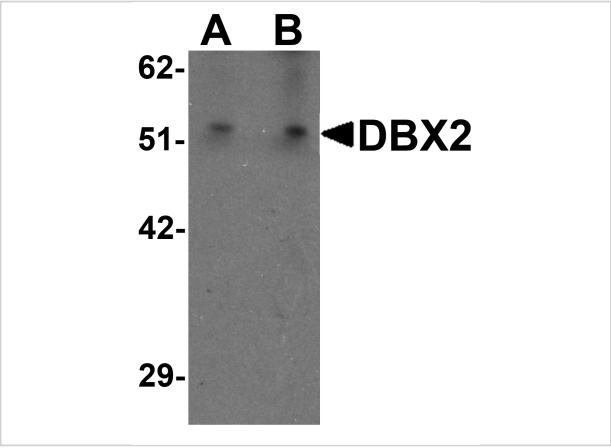
CATALOG NUMBER: 6873

Specifications

Host Species	Rabbit
Species Reactivity	Human
Immunogen	DBX2 antibody was raised against a 16 amino acid synthetic peptide near the amino terminus of human DBX2. The immunogen is located within amino acids 30 - 80 of DBX2.
Conjugate	Unconjugated
Tested Applications	ELISA, IF, IHC-P, WB
User Note	Optimal dilutions for each application to be determined by the researcher.
Specificity	DBX2 antibody is human specific. At least two isoforms of DBX2 are known to exist; this antibody will only detect the shortest isoform.

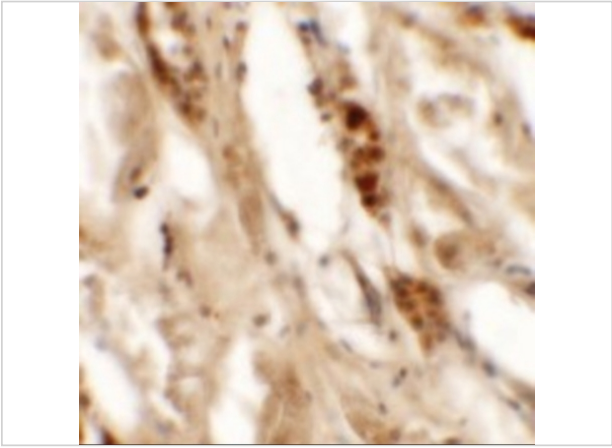
Properties

Purification	DBX2 Antibody is affinity chromatography purified via peptide column.
Clonality	Polyclonal
Isotype	IgG
Physical State	Liquid
Buffer	DBX2 Antibody is supplied in PBS containing 0.02% sodium azide.
Concentration	1 mg/mL
Storage Conditions	DBX2 antibody can be stored at 4°C for three months and -20°C, stable for up to one year. As with all antibodies care should be taken to avoid repeated freeze thaw cycles. Antibodies should not be exposed to prolonged high temperatures.



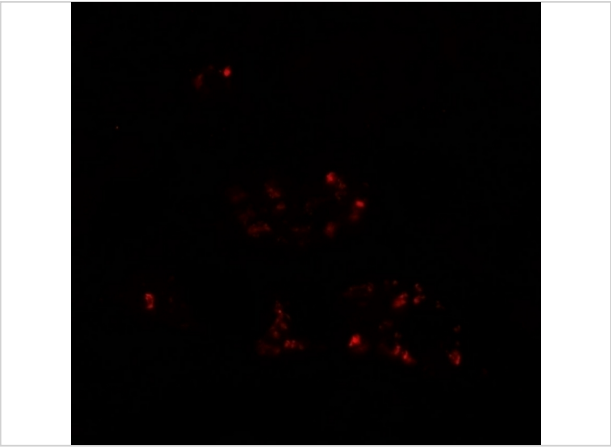
DBX2 Antibody 1

Western blot analysis of WDR18 in rat lung tissue lysate with WDR18 antibody at (A) 1 and (B) 2 $\mu\text{g/mL}$.



DBX2 Antibody 2

Immunohistochemistry of DBX2 in human kidney tissue with DBX2 antibody at 5 $\mu\text{g/mL}$.



DBX2 Antibody 3

Immunofluorescence of DBX2 in human kidney tissue with DBX2 antibody at 20 $\mu\text{g/mL}$.

Disclaimer

Disclaimer	Optimal dilutions/concentrations should be determined by the end user. The information provided is a guideline for product use. This product is for research use only.
-------------------	--

For research use only. For additional information, visit ProSci's [Terms and Conditions Page](#).