

## ESRRB Antibody

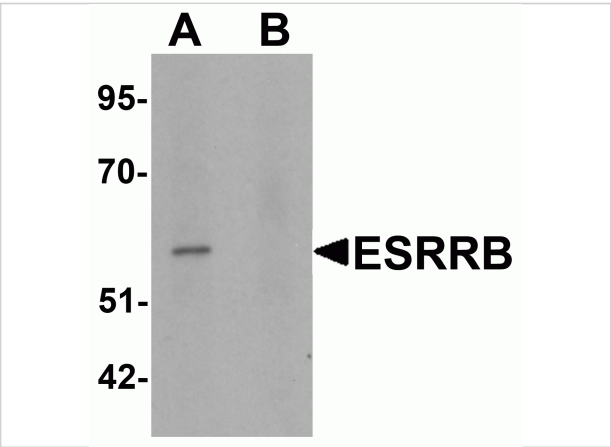
CATALOG NUMBER: 6813

### Specifications

Host Species	Rabbit
Species Reactivity	Human
Homology	Predicted species reactivity based on immunogen sequence: Mouse: (89%), Rat: (89%)
Immunogen	ESRRB antibody was raised against a 19 amino acid synthetic peptide near the carboxy terminus of human ESRRB. The immunogen is located within amino acids 360 - 410 of ESRRB.
Conjugate	Unconjugated
Tested Applications	ELISA, IF, IHC-P, WB
User Note	Optimal dilutions for each application to be determined by the researcher.

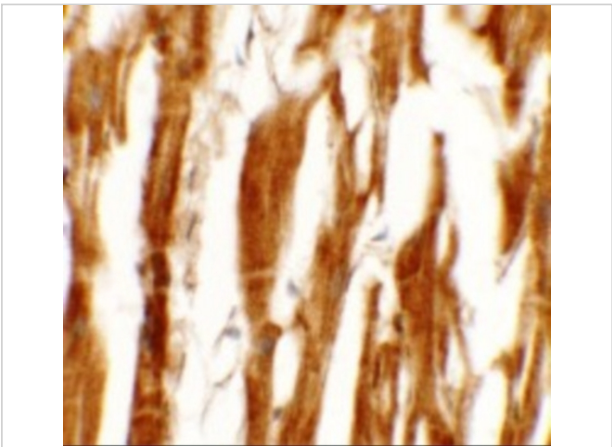
### Properties

Purification	ESRRB Antibody is affinity chromatography purified via peptide column.
Clonality	Polyclonal
Isotype	IgG
Physical State	Liquid
Buffer	ESRRB Antibody is supplied in PBS containing 0.02% sodium azide.
Concentration	1 mg/mL
Storage Conditions	ESRRB antibody can be stored at 4°C for three months and -20°C, stable for up to one year. As with all antibodies care should be taken to avoid repeated freeze thaw cycles. Antibodies should not be exposed to prolonged high temperatures.



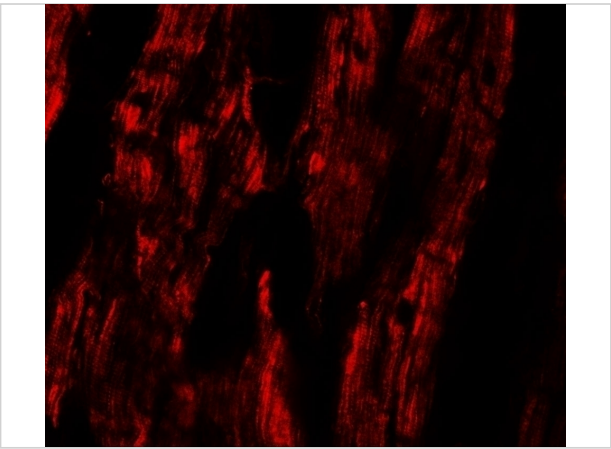
ESRRB Antibody 1

Western blot analysis of ESRRB in human heart tissue lysate with ESRRB antibody at 1 µg/mL in (A) the absence and (B) the presence of blocking peptide.



ESRRB Antibody 2

Immunohistochemistry of ESRRB in human heart tissue with ESRRB antibody at 5 µg/mL.



ESRRB Antibody 3

Immunofluorescence of ESRRB in human heart tissue with ESRRB antibody at 20 µg/mL.

Disclaimer

Disclaimer	Optimal dilutions/concentrations should be determined by the end user. The information provided is a guideline for product use. This product is for research use only.
------------	--

For research use only. For additional information, visit ProSci's [Terms and Conditions Page](#).