

## TFEB Antibody

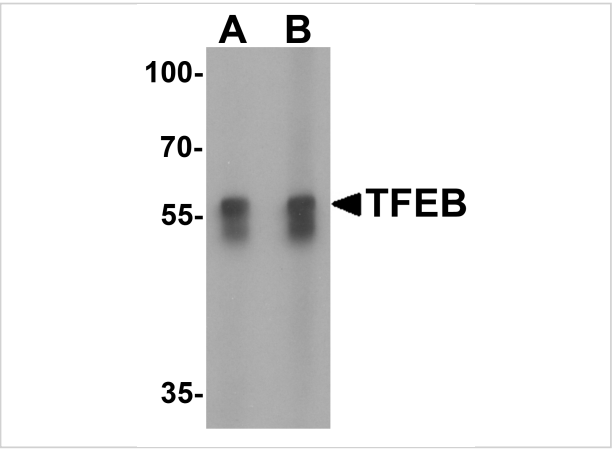
CATALOG NUMBER: 6801

### Specifications

Host Species	Rabbit
Species Reactivity	Human
Homology	Predicted species reactivity based on immunogen sequence: Mouse: (100%)
Immunogen	TFEB antibody was raised against an 18 amino acid synthetic peptide near the amino terminus of human TFEB. The immunogen is located within amino acids 70 - 120 of TFEB.
Conjugate	Unconjugated
Tested Applications	ELISA, IF, IHC-P, WB
User Note	Optimal dilutions for each application to be determined by the researcher.

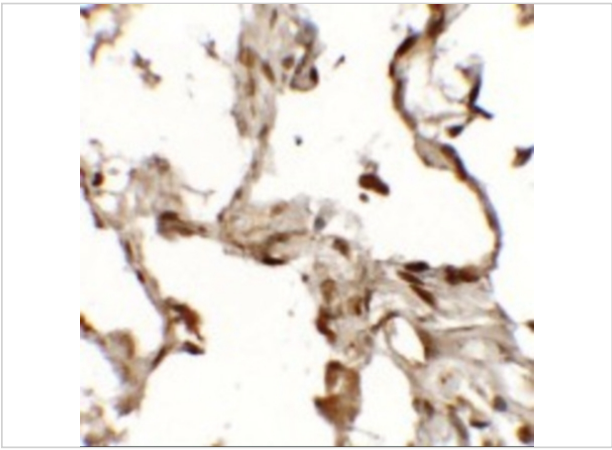
### Properties

Purification	TFEB Antibody is affinity chromatography purified via peptide column.
Clonality	Polyclonal
Isotype	IgG
Physical State	Liquid
Buffer	TFEB Antibody is supplied in PBS containing 0.02% sodium azide.
Concentration	1 mg/mL
Storage Conditions	TFEB antibody can be stored at 4°C up to one year. Antibodies should not be exposed to prolonged high temperatures.



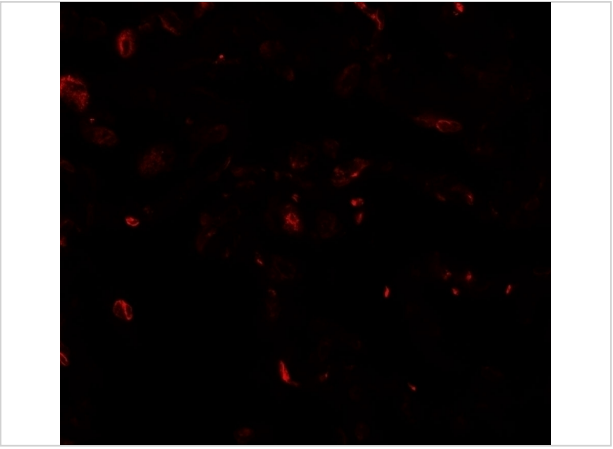
TFEB Antibody 1

Western blot analysis of TFEB in A549 cell lysate with TFEB antibody at (A) 1 and (B) 2  $\mu\text{g/mL}$ .



TFEB Antibody 2

Immunohistochemistry of TFEB (NT) in human lung tissue with TFEB (NT) antibody at 2.5  $\mu\text{g/mL}$ .



TFEB Antibody 3

Immunofluorescence of TFEB in human lung tissue with TFEB antibody at 20  $\mu\text{g/mL}$ .

Disclaimer

Disclaimer	Optimal dilutions/concentrations should be determined by the end user. The information provided is a guideline for product use. This product is for research use only.
------------	--

For research use only. For additional information, visit ProSci's [Terms and Conditions Page](#).