

## RILP Antibody

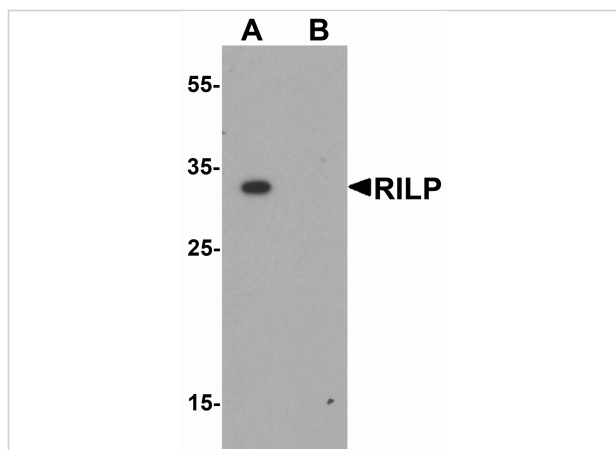
CATALOG NUMBER: 6791

### Specifications

|                     |  |
|---------------------|--|
| Host Species        | Rabbit   |
| Species Reactivity  | Human, Mouse   |
| Immunogen           | RILP antibody was raised against an 18 amino acid synthetic peptide near the center of human RILP.<br>The immunogen is located within amino acids 110 - 160 of RILP. |
| Conjugate           | Unconjugated   |
| Tested Applications | ELISA, ICC, IF, WB   |
| User Note           | Optimal dilutions for each application to be determined by the researcher.   |

### Properties

|                    |  |
|--------------------|--|
| Purification       | RILP Antibody is affinity chromatography purified via peptide column.  |
| Clonality          | Polyclonal   |
| Isotype            | IgG  |
| Physical State     | Liquid   |
| Buffer             | RILP Antibody is supplied in PBS containing 0.02% sodium azide.  |
| Concentration      | 1 mg/mL  |
| Storage Conditions | RILP antibody can be stored at 4°C for three months and -20°C, stable for up to one year. As with all antibodies care should be taken to avoid repeated freeze thaw cycles. Antibodies should not be exposed to prolonged high temperatures. |



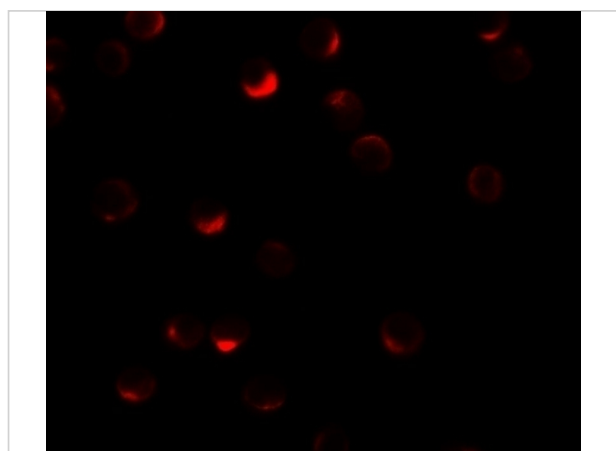
### RILP Antibody 1

Western blot analysis of RILP in A20 cell lysate with RILP antibody at 1 µg/mL.



### RILP Antibody 2

Immunocytochemistry of RILP in HeLa cells with RILP antibody at 2.5 µg/mL.



### RILP Antibody 3

Immunofluorescence of RILP in HeLa cells with RILP antibody at 20 µg/mL.

## Disclaimer

#### Disclaimer

Optimal dilutions/concentrations should be determined by the end user. The information provided is a guideline for product use. This product is for research use only.

For research use only. For additional information, visit ProSci's [Terms and Conditions Page](#).