

## TSHZ1 Antibody

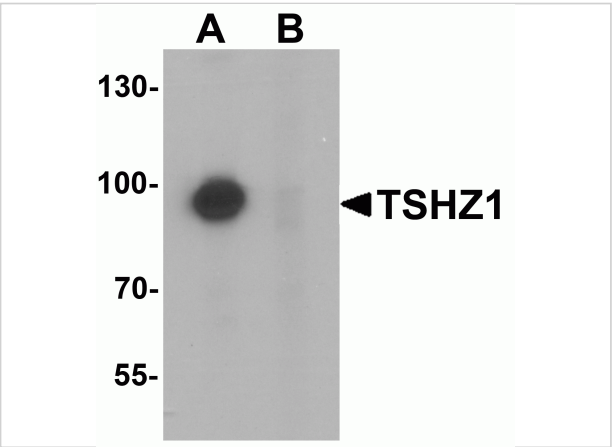
CATALOG NUMBER: 6755

### Specifications

Host Species	Rabbit
Species Reactivity	Human, Mouse, Rat
Immunogen	TSHZ1 antibody was raised against a 16 amino acid synthetic peptide near the amino terminus of human TSHZ1. The immunogen is located within amino acids 70 - 120 of TSHZ1.
Conjugate	Unconjugated
Tested Applications	ELISA, ICC, IF, WB
User Note	Optimal dilutions for each application to be determined by the researcher.

### Properties

Purification	TSHZ1 Antibody is affinity chromatography purified via peptide column.
Clonality	Polyclonal
Isotype	IgG
Physical State	Liquid
Buffer	TSHZ1 Antibody is supplied in PBS containing 0.02% sodium azide.
Concentration	1 mg/mL
Storage Conditions	TSHZ1 antibody can be stored at 4°C for three months and -20°C, stable for up to one year. As with all antibodies care should be taken to avoid repeated freeze thaw cycles. Antibodies should not be exposed to prolonged high temperatures.



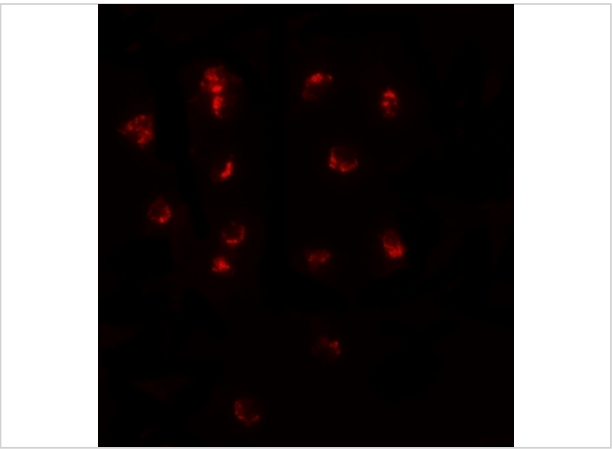
TSHZ1 Antibody 1

Western blot analysis of TSHZ1 in A-20 cell lysate with TSHZ1 antibody at 1 µg/mL in (A) the absence and (B) the presence of blocking peptide.



TSHZ1 Antibody 2

Immunocytochemistry of TSHZ1 in A20 cells with TSHZ1 antibody at 2.5 µg/mL.



TSHZ1 Antibody 3

Immunofluorescence of TSHZ1 in A20 cells with TSHZ1 antibody at 20 µg/mL.

Disclaimer

Disclaimer	Optimal dilutions/concentrations should be determined by the end user. The information provided is a guideline for product use. This product is for research use only.
------------	--

For research use only. For additional information, visit ProSci's [Terms and Conditions Page](#).