

## NKX2-6 Antibody

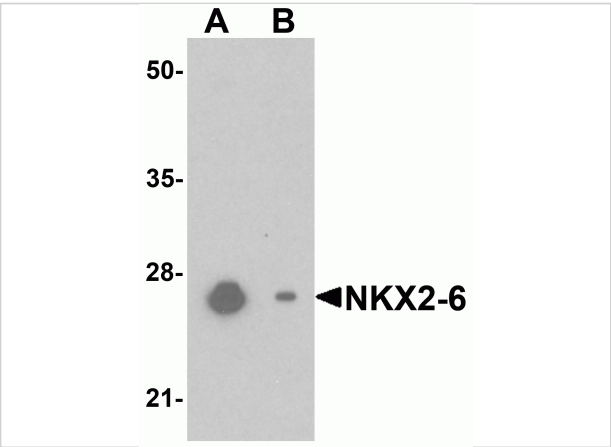
CATALOG NUMBER: 6751

### Specifications

|                     |                                                                                                                                                                                     |
|---------------------|-------------------------------------------------------------------------------------------------------------------------------------------------------------------------------------|
| Host Species        | Rabbit                                                                                                                                                                              |
| Species Reactivity  | Human, Mouse                                                                                                                                                                        |
| Immunogen           | NKX2-6 antibody was raised against a 15 amino acid synthetic peptide near the center of human NKX2-6.<br>The immunogen is located within amino acids 170 - 220 of NKX2-6.           |
| Conjugate           | Unconjugated                                                                                                                                                                        |
| Tested Applications | ELISA, IF, IHC-P, WB                                                                                                                                                                |
| User Note           | Optimal dilutions for each application to be determined by the researcher.                                                                                                          |
| Specificity         | NKX2-6 antibody is predicted to not cross-react with other NK2 homeobox family members. At least two isoforms of NKX2-6 are known to exist; this antibody will detect both isoforms |

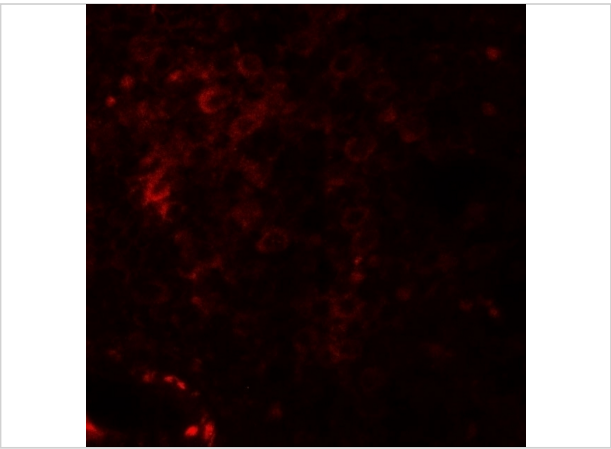
### Properties

|                    |                                                                                                                                                                                                                                                |
|--------------------|------------------------------------------------------------------------------------------------------------------------------------------------------------------------------------------------------------------------------------------------|
| Purification       | NKX2-6 Antibody is affinity chromatography purified via peptide column.                                                                                                                                                                        |
| Clonality          | Polyclonal                                                                                                                                                                                                                                     |
| Isotype            | IgG                                                                                                                                                                                                                                            |
| Physical State     | Liquid                                                                                                                                                                                                                                         |
| Buffer             | NKX2-6 Antibody is supplied in PBS containing 0.02% sodium azide.                                                                                                                                                                              |
| Concentration      | 1 mg/mL                                                                                                                                                                                                                                        |
| Storage Conditions | NKX2-6 antibody can be stored at 4°C for three months and -20°C, stable for up to one year. As with all antibodies care should be taken to avoid repeated freeze thaw cycles. Antibodies should not be exposed to prolonged high temperatures. |



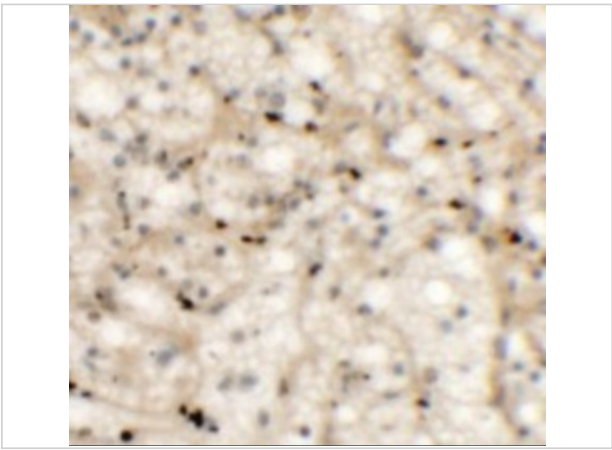
NKX2-6 Antibody 1

Western blot analysis of NKX2-6 in mouse heart tissue lysate with NKX2-6 antibody at 1 µg/mL in (A) the absence and (B) the presence of blocking peptide.



NKX2-6 Antibody 3

Immunofluorescence of NKX-6 in human spleen tissue with NKX2-6 antibody at 20 µg/mL.



NKX2-6 Antibody 2

Immunohistochemistry of NKX2-6 in human spleen tissue with NKX2-6 antibody at 5 µg/mL.

Disclaimer

|            |                                                                                                                                                                        |
|------------|------------------------------------------------------------------------------------------------------------------------------------------------------------------------|
| Disclaimer | Optimal dilutions/concentrations should be determined by the end user. The information provided is a guideline for product use. This product is for research use only. |
|------------|------------------------------------------------------------------------------------------------------------------------------------------------------------------------|

For research use only. For additional information, visit ProSci's [Terms and Conditions Page](#).