

GRB10 Antibody

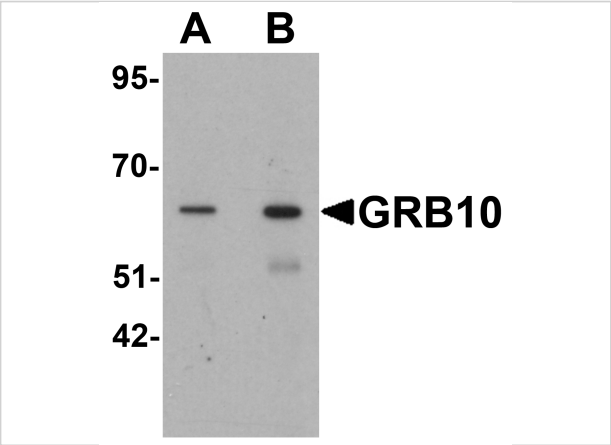
CATALOG NUMBER: 6733

Specifications

Host Species	Rabbit
Species Reactivity	Human, Mouse, Rat
Homology	Predicted species reactivity based on immunogen sequence: Pig: (100%)
Immunogen	GRB10 antibody was raised against a 17 amino acid synthetic peptide near the carboxy terminus of human GRB10. The immunogen is located within amino acids 440 - 490 of GRB10.
Conjugate	Unconjugated
Tested Applications	ELISA, IF, WB
User Note	Optimal dilutions for each application to be determined by the researcher.
Specificity	At least three isoforms of GRB10 are known to exist; this antibody will detect all three isoforms.

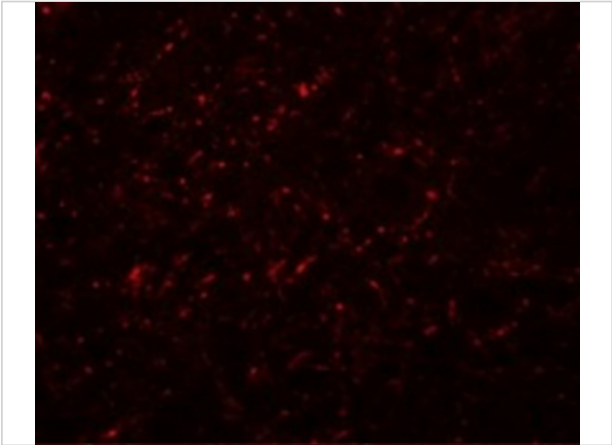
Properties

Purification	GRB10 Antibody is affinity chromatography purified via peptide column.
Clonality	Polyclonal
Isotype	IgG
Physical State	Liquid
Buffer	GRB10 Antibody is supplied in PBS containing 0.02% sodium azide.
Concentration	1 mg/mL
Storage Conditions	GRB10 antibody can be stored at 4°C for three months and -20°C, stable for up to one year. As with all antibodies care should be taken to avoid repeated freeze thaw cycles. Antibodies should not be exposed to prolonged high temperatures.



GRB10 Antibody 1

Western blot analysis of GRB10 in SK-N-SH cell lysate with GRB10 antibody at (A) 1 and (B) 2 µg/mL.



GRB10 Antibody 2

Immunofluorescence of GRB10 in rat brain cells with GRB10 antibody at 20 µg/mL.

Disclaimer

Disclaimer	Optimal dilutions/concentrations should be determined by the end user. The information provided is a guideline for product use. This product is for research use only.
-------------------	--

For research use only. For additional information, visit ProSci's [Terms and Conditions Page](#).