

PTCHD2 Antibody

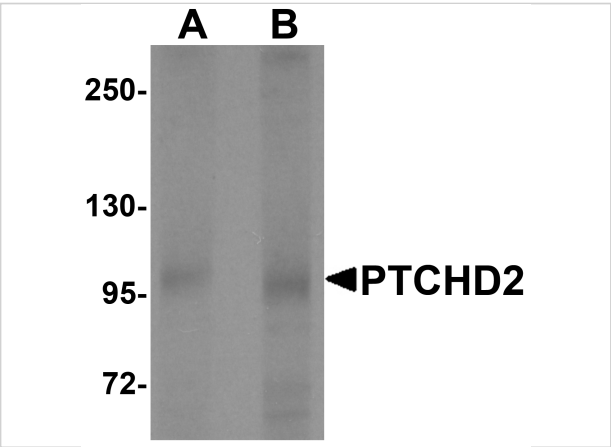
CATALOG NUMBER: 6637

Specifications

Host Species	Rabbit
Species Reactivity	Human, Mouse, Rat
Homology	Predicted species reactivity based on immunogen sequence: Chicken: (89%)
Immunogen	PTCHD2 antibody was raised against a 19 amino acid synthetic peptide from near the center of human PTCHD2. The immunogen is located within amino acids 780 - 830 of PTCHD2.
Conjugate	Unconjugated
Tested Applications	ELISA, IF, IHC-P, WB
User Note	Optimal dilutions for each application to be determined by the researcher.
Specificity	At least two isoforms of PTCHD2 are known to exist. This antibody is specific for PTCHD2 and will not recognize the other DISP family of proteins.

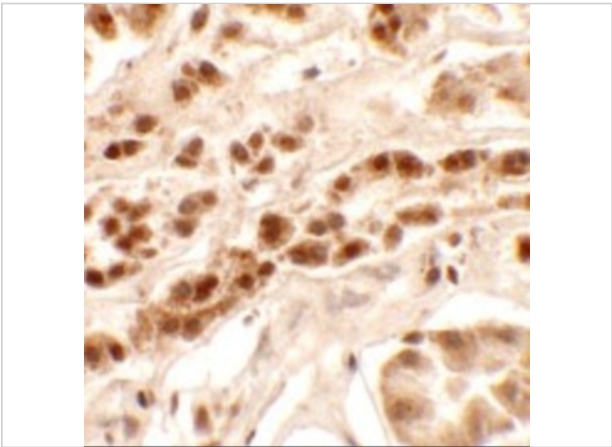
Properties

Purification	PTCHD2 Antibody is affinity chromatography purified via peptide column.
Clonality	Polyclonal
Isotype	IgG
Physical State	Liquid
Buffer	PTCHD2 Antibody is supplied in PBS containing 0.02% sodium azide.
Concentration	1 mg/mL
Storage Conditions	PTCHD2 antibody can be stored at 4°C for three months and -20°C, stable for up to one year. As with all antibodies care should be taken to avoid repeated freeze thaw cycles. Antibodies should not be exposed to prolonged high temperatures.



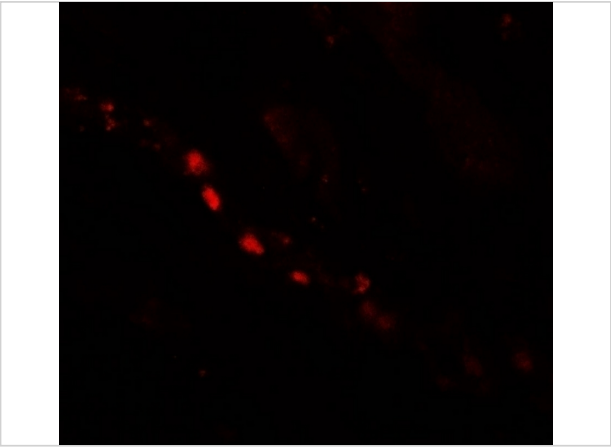
PTCHD2 Antibody 1

Western blot analysis of PTCHD2 in mouse kidney tissue lysate with PTCHD2 antibody at (A) 1 and (B) 2 µg/mL.



PTCHD2 Antibody 2

Immunohistochemistry of PTCHD2 in human kidney tissue with PTCHD2 antibody at 2.5 µg/mL.



PTCHD2 Antibody 3

Immunofluorescence of PTCHD2 in human kidney tissue with PTCHD2 antibody at 20 µg/mL.

Disclaimer

Disclaimer	Optimal dilutions/concentrations should be determined by the end user. The information provided is a guideline for product use. This product is for research use only.
------------	--

For research use only. For additional information, visit ProSci's [Terms and Conditions Page](#).