

SPATA19 Antibody

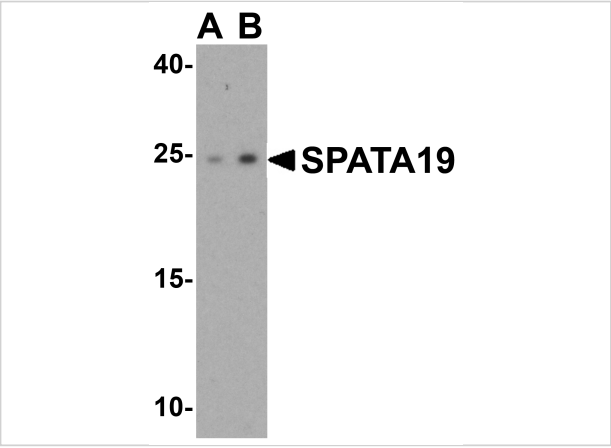
CATALOG NUMBER: 6617

Specifications

Host Species	Chicken
Species Reactivity	Human, Mouse, Rat
Homology	Predicted species reactivity based on immunogen sequence: Bovine: (82%)
Immunogen	SPATA19 antibody was raised against an 17 amino acid synthetic peptide near the amino terminus of human SPATA19. The immunogen is located within amino acids 30 - 80 of SPATA19.
Conjugate	Unconjugated
Tested Applications	ELISA, WB
User Note	Optimal dilutions for each application to be determined by the researcher.
Specificity	At least two isoforms of SPATA19 are known to exist; this antibody will detect both isoforms. SPATA19 antibody is predicted to not cross-react with other SPATA family members.
Predicted Molecular Weight	Predicted: 18 kDa Observed: 26 kDa

Properties

Purification	SPATA19 Antibody is affinity chromatography purified via peptide column.
Clonality	Polyclonal
Isotype	IgY
Physical State	Liquid
Buffer	SPATA19 Antibody is supplied in PBS containing 0.02% sodium azide.
Concentration	1 mg/mL
Storage Conditions	SPATA19 antibody can be stored at 4°C for three months and -20°C, stable for up to one year. As with all antibodies care should be taken to avoid repeated freeze thaw cycles. Antibodies should not be exposed to prolonged high temperatures.



SPATA19 Antibody 1

Western blot analysis of SPATA19 in human testis tissue lysate with SPATA19 antibody at (A) 1 and (B) 2 µg/mL.

Disclaimer

Disclaimer	Optimal dilutions/concentrations should be determined by the end user. The information provided is a guideline for product use. This product is for research use only.
------------	--

For research use only. For additional information, visit ProSci's [Terms and Conditions Page](#).