

## Thymopoietin Antibody

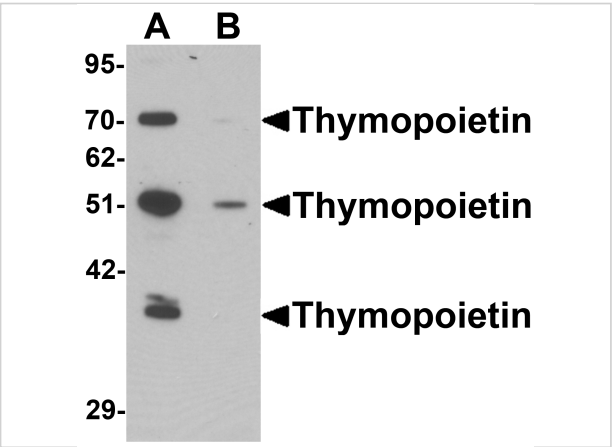
CATALOG NUMBER: 6605

### Specifications

Host Species	Rabbit
Species Reactivity	Human, Mouse
Homology	Predicted species reactivity based on immunogen sequence: Rat: (95%)
Immunogen	Thymopoietin antibody was raised against a 19 amino acid synthetic peptide near the amino terminus of human Thymopoietin. The immunogen is located within amino acids 80 - 130 of Thymopoietin.
Conjugate	Unconjugated
Tested Applications	ELISA, ICC, IF, WB
User Note	Optimal dilutions for each application to be determined by the researcher.
Specificity	At least three isoforms of Thymopoietin are known to exist; this antibody will detect all isoforms. Thymopoietin antibody is predicted to not cross-react with other LEM domain-containing proteins.

### Properties

Purification	Thymopoietin Antibody is affinity chromatography purified via peptide column.
Clonality	Polyclonal
Isotype	IgG
Physical State	Liquid
Buffer	Thymopoietin Antibody is supplied in PBS containing 0.02% sodium azide.
Concentration	1 mg/mL
Storage Conditions	Thymopoietin antibody can be stored at 4°C for three months and -20°C, stable for up to one year. As with all antibodies care should be taken to avoid repeated freeze thaw cycles. Antibodies should not be exposed to prolonged high temperatures.



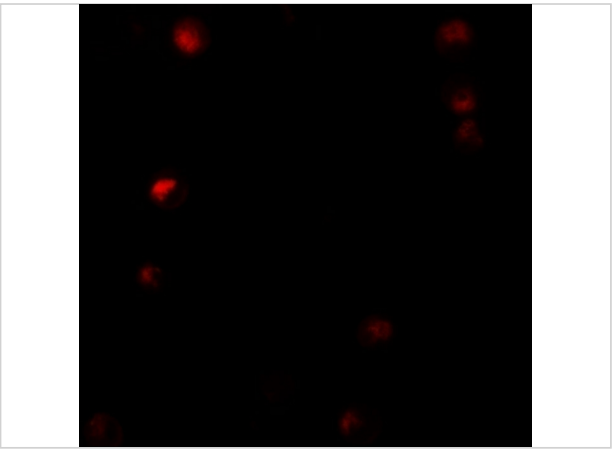
Thymopoietin Antibody 1

Western blot analysis of Thymopoietin in HeLa cell lysate with Thymopoietin antibody at 0.25 µg/mL in (A) the absence and (B) the presence of blocking peptide.



Thymopoietin Antibody 2

Immunocytochemistry of Thymopoietin in HeLa cells with Thymopoietin antibody at 2.5 µg/mL.



Thymopoietin Antibody 3

Immunofluorescence of Thymopoietin in HeLa cells with Thymopoietin antibody at 5 µg/mL.

Disclaimer

Disclaimer	Optimal dilutions/concentrations should be determined by the end user. The information provided is a guideline for product use. This product is for research use only.
------------	--

For research use only. For additional information, visit ProSci's [Terms and Conditions Page](#).