

LEMD3 Antibody

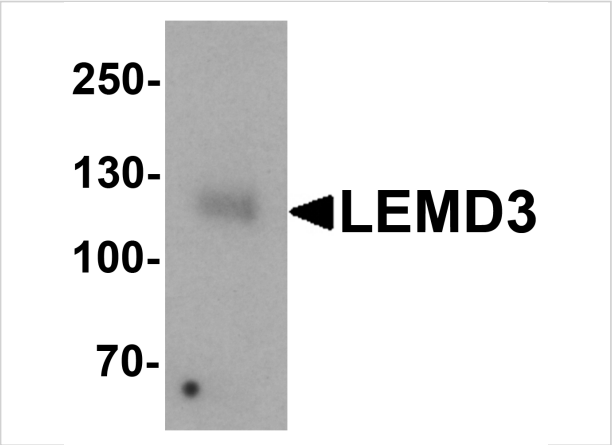
CATALOG NUMBER: 6603

Specifications

Host Species	Rabbit
Species Reactivity	Human, Mouse
Immunogen	LEMD3 antibody was raised against an 18 amino acid synthetic peptide near the carboxy terminus of human LEMD3. The immunogen is located within the last 50 amino acids of LEMD3.
Conjugate	Unconjugated
Tested Applications	ELISA, IF, IHC-P, WB
User Note	Optimal dilutions for each application to be determined by the researcher.
Specificity	At least three isoforms of LEMD3 are known to exist; this antibody will detect all isoforms. LEMD3 antibody is predicted to not cross-react with LEMD1 and LEMD2

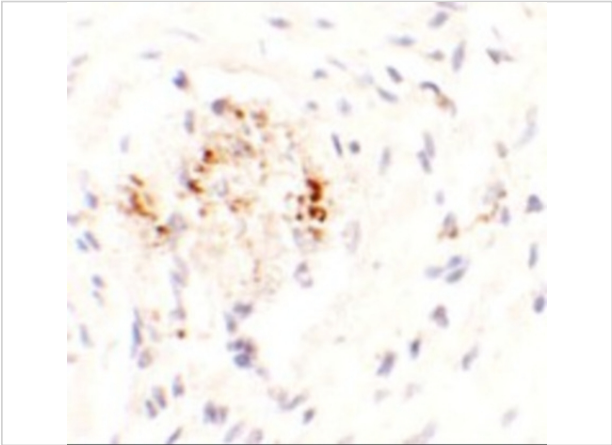
Properties

Purification	LEMD3 Antibody is affinity chromatography purified via peptide column.
Clonality	Polyclonal
Isotype	IgG
Physical State	Liquid
Buffer	LEMD3 Antibody is supplied in PBS containing 0.02% sodium azide.
Concentration	1 mg/mL
Storage Conditions	LEMD3 antibody can be stored at 4°C for three months and -20°C, stable for up to one year. As with all antibodies care should be taken to avoid repeated freeze thaw cycles. Antibodies should not be exposed to prolonged high temperatures.



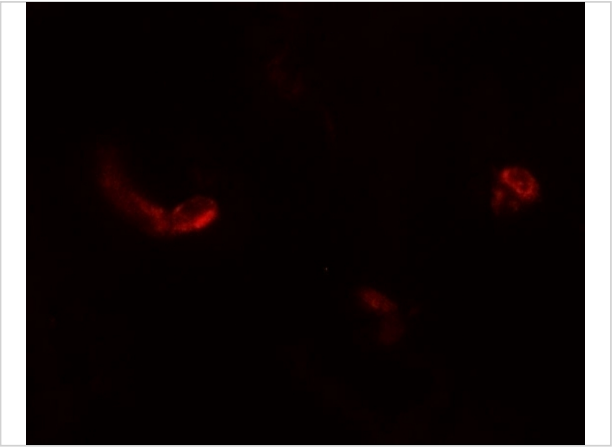
LEM3 Antibody 1

Western blot analysis of LEM3 in human colon tissue lysate with LEM3 antibody at 1 µg/mL.



LEM3 Antibody 2

Immunohistochemistry of LEM3 in human colon tissue with LEM3 antibody at 2.5 µg/mL.



LEM3 Antibody 3

Immunofluorescence of LEM3 in human colon tissue with LEM3 antibody at 5 µg/mL.

Disclaimer

Disclaimer	Optimal dilutions/concentrations should be determined by the end user. The information provided is a guideline for product use. This product is for research use only.
------------	--

For research use only. For additional information, visit ProSci's [Terms and Conditions Page](#).