

SPATA1 Antibody

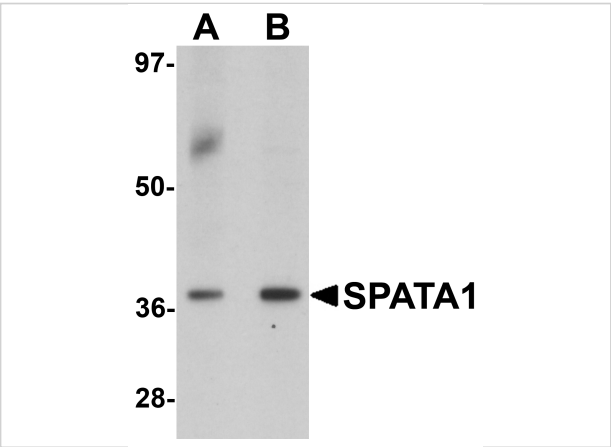
CATALOG NUMBER: 6549

Specifications

Host Species	Rabbit
Species Reactivity	Human, Mouse
Homology	Predicted species reactivity based on immunogen sequence: Rat: (72%)
Immunogen	SPATA1 antibody was raised against an 18 amino acid synthetic peptide near the carboxy terminus of human SPATA1. The immunogen is located within amino acids 300 - 350 of SPATA1.
Conjugate	Unconjugated
Tested Applications	ELISA, IF, IHC-P, WB
User Note	Optimal dilutions for each application to be determined by the researcher.
Specificity	At least two isoforms of SPATA1 are known to exist; this antibody will detect only the longest isoforms. SPATA1 antibody is predicted to not cross-react with other SPATA family members.

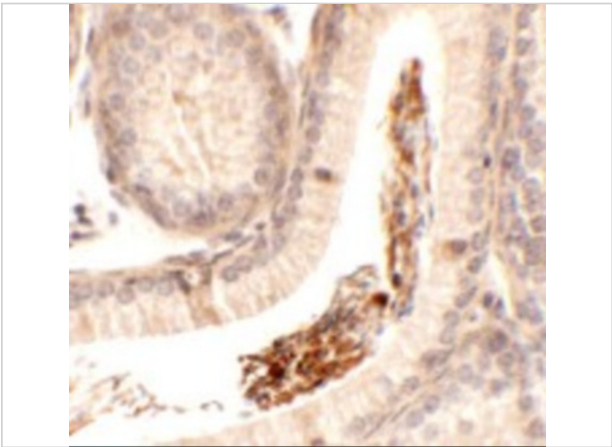
Properties

Purification	SPATA1 Antibody is affinity chromatography purified via peptide column.
Clonality	Polyclonal
Isotype	IgG
Physical State	Liquid
Buffer	SPATA1 Antibody is supplied in PBS containing 0.02% sodium azide.
Concentration	1 mg/mL
Storage Conditions	SPATA1 antibody can be stored at 4°C for three months and -20°C, stable for up to one year. As with all antibodies care should be taken to avoid repeated freeze thaw cycles. Antibodies should not be exposed to prolonged high temperatures.



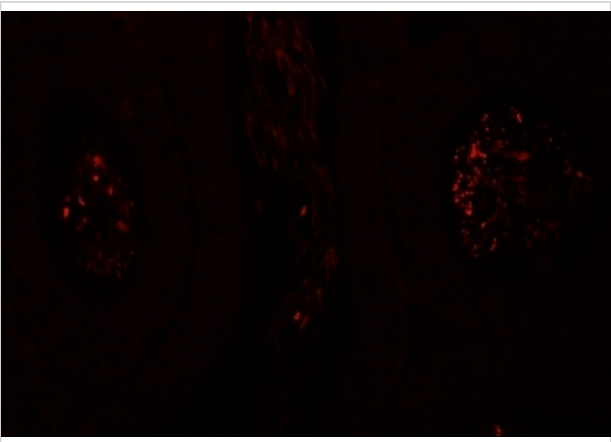
SPATA1 Antibody 1

Western blot analysis of SPATA1 in A20 cell lysate with SPATA1 antibody at (A) 1 and (B) 2 µg/mL.



SPATA1 Antibody 2

Immunohistochemistry of SPATA1 in mouse testis tissue with SPATA1 antibody at 2.5 µg/mL.



SPATA1 Antibody 3

Immunofluorescence of SPATA1 in mouse testis tissue with SPATA1 antibody at 20 µg/mL.

Disclaimer

Disclaimer	Optimal dilutions/concentrations should be determined by the end user. The information provided is a guideline for product use. This product is for research use only.
-------------------	--

For research use only. For additional information, visit ProSci's [Terms and Conditions Page](#).