

RASSF6 Antibody

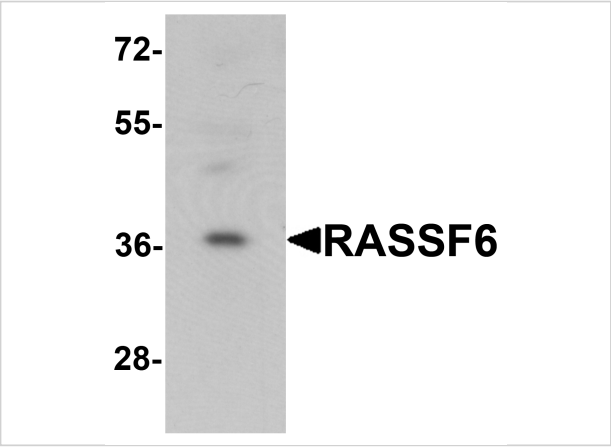
CATALOG NUMBER: 6543

Specifications

Host Species	Rabbit
Species Reactivity	Human
Homology	Predicted species reactivity based on immunogen sequence: Mouse: (93%), Rat: (93%)
Immunogen	RASSF6 antibody was raised against a 14 amino acid synthetic peptide near the center of human RASSF6. The immunogen is located within amino acids 230 - 280 of RASSF6.
Conjugate	Unconjugated
Tested Applications	ELISA, WB
User Note	Optimal dilutions for each application to be determined by the researcher.
Specificity	At least four isoforms of RASSF6 are known to exist. RASSF6 antibody is predicted to not cross-react with other RASSF family members.

Properties

Purification	RASSF6 Antibody is affinity chromatography purified via peptide column.
Clonality	Polyclonal
Isotype	IgG
Physical State	Liquid
Buffer	RASSF6 Antibody is supplied in PBS containing 0.02% sodium azide.
Concentration	1 mg/mL
Storage Conditions	RASSF6 antibody can be stored at 4°C for three months and -20°C, stable for up to one year. As with all antibodies care should be taken to avoid repeated freeze thaw cycles. Antibodies should not be exposed to prolonged high temperatures.



RASSF6 Antibody 1

Western blot analysis of RASSF6 in 293 cell lysate with RASSF6 antibody at 1 µg/mL.

Disclaimer

Disclaimer	Optimal dilutions/concentrations should be determined by the end user. The information provided is a guideline for product use. This product is for research use only.
-------------------	--

For research use only. For additional information, visit ProSci's [Terms and Conditions Page](#).