

## ECRG4 Antibody

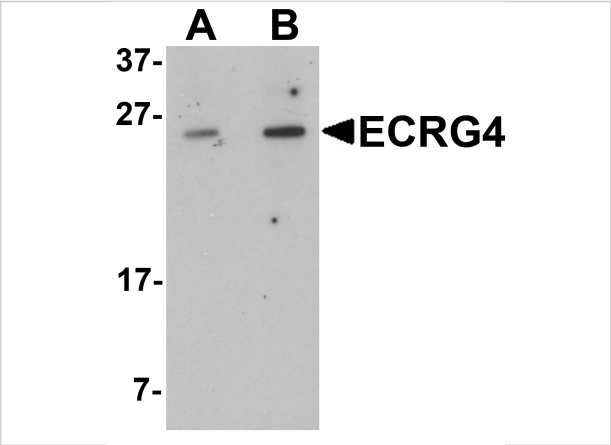
CATALOG NUMBER: 6535

### Specifications

Host Species	Rabbit
Species Reactivity	Human, Mouse, Rat
Homology	Predicted species reactivity based on immunogen sequence: Bovine: (75%)
Immunogen	ECRG4 antibody was raised against a 20 amino acid synthetic peptide near the carboxy terminus of human ECRG4. The immunogen is located within the last 50 amino acids of ECRG4.
Conjugate	Unconjugated
Tested Applications	ELISA, ICC, WB
User Note	Optimal dilutions for each application to be determined by the researcher.
Specificity	ECRG4 antibody is predicted to not cross-react with other ECRG family members.

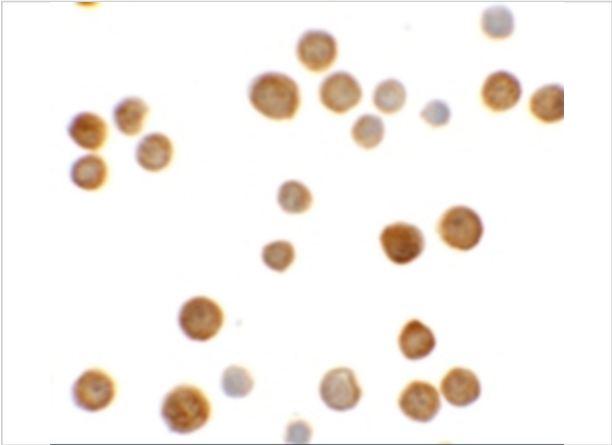
### Properties

Purification	ECRG4 Antibody is affinity chromatography purified via peptide column.
Clonality	Polyclonal
Isotype	IgG
Physical State	Liquid
Buffer	ECRG4 Antibody is supplied in PBS containing 0.02% sodium azide.
Concentration	1 mg/mL
Storage Conditions	ECRG4 antibody can be stored at 4°C for three months and -20°C, stable for up to one year. As with all antibodies care should be taken to avoid repeated freeze thaw cycles. Antibodies should not be exposed to prolonged high temperatures.



ECRG4 Antibody 1

Western blot analysis of ECRG4 in HeLa cell lysate with ECRG4 antibody at (A) 1 and (B) 2 µg/mL.



ECRG4 Antibody 2

Immunocytochemistry of ECRG4 in HeLa cells with ECRG4 antibody at 5 µg/mL.

Disclaimer

Disclaimer	Optimal dilutions/concentrations should be determined by the end user. The information provided is a guideline for product use. This product is for research use only.
------------	--

For research use only. For additional information, visit ProSci's [Terms and Conditions Page](#).