

SDHAF2 Antibody

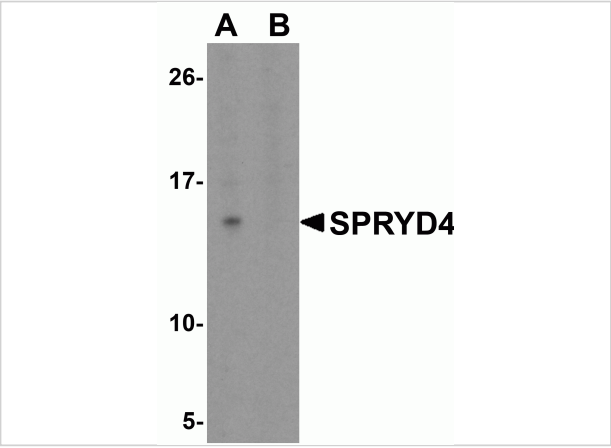
CATALOG NUMBER: 6507

Specifications

Host Species	Chicken
Species Reactivity	Human, Mouse, Rat
Homology	Predicted species reactivity based on immunogen sequence: Bovine: (93%)
Immunogen	SDHAF2 antibody was raised against a 16 amino acid synthetic peptide near the amino terminus of human SDHAF2. The immunogen is located within the first 50 amino acids of SDHAF2.
Conjugate	Unconjugated
Tested Applications	ELISA, WB
User Note	Optimal dilutions for each application to be determined by the researcher.
Specificity	SDHAF2 antibody is predicted to not cross-react with other SDHAF protein family members.

Properties

Purification	SDHAF2 Antibody is affinity chromatography purified via peptide column.
Clonality	Polyclonal
Isotype	IgY
Physical State	Liquid
Buffer	SDHAF2 Antibody is supplied in PBS containing 0.02% sodium azide.
Concentration	1 mg/mL
Storage Conditions	SDHAF2 antibody can be stored at 4°C for three months and -20°C, stable for up to one year. As with all antibodies care should be taken to avoid repeated freeze thaw cycles. Antibodies should not be exposed to prolonged high temperatures.



SDHAF2 Antibody 1

Western blot analysis of SDHAF2 in rat liver tissue lysate with SDHAF2 antibody at 1 µg/mL in (A) the absence and (B) the presence of blocking peptide.

Disclaimer

Disclaimer	Optimal dilutions/concentrations should be determined by the end user. The information provided is a guideline for product use. This product is for research use only.
------------	--

For research use only. For additional information, visit ProSci's [Terms and Conditions Page](#).