

## EI24 Antibody

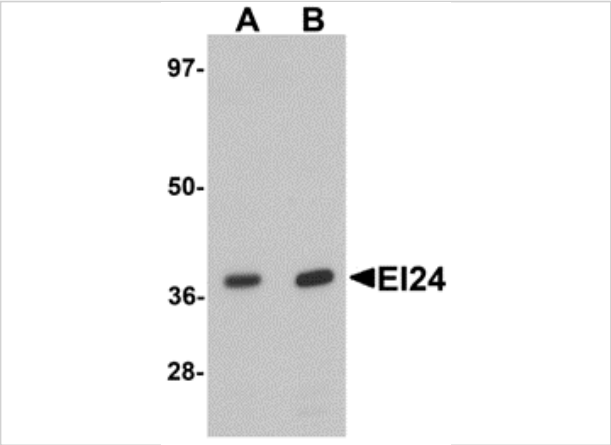
CATALOG NUMBER: 6487

### Specifications

Host Species	Rabbit
Species Reactivity	Human, Mouse, Rat
Homology	Predicted species reactivity based on immunogen sequence: Bovine: (95%)
Immunogen	EI24 antibody was raised against a 19 amino acid synthetic peptide near the carboxy terminus of human EI24. The immunogen is located within the last 50 amino acids of EI24.
Conjugate	Unconjugated
Tested Applications	ELISA, IHC-P, WB
User Note	Optimal dilutions for each application to be determined by the researcher.
Specificity	At least two isoforms of EI24 are known to exist; this antibody will only detect the larger isoform.

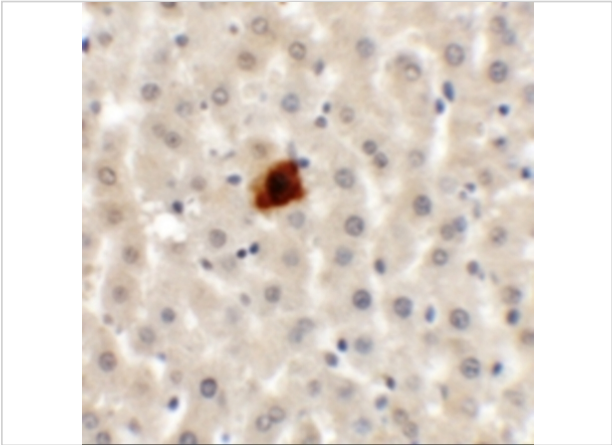
### Properties

Purification	EI24 Antibody is affinity chromatography purified via peptide column.
Clonality	Polyclonal
Isotype	IgG
Physical State	Liquid
Buffer	EI24 Antibody is supplied in PBS containing 0.02% sodium azide.
Concentration	1 mg/mL
Storage Conditions	EI24 antibody can be stored at 4°C for three months and -20°C, stable for up to one year. As with all antibodies care should be taken to avoid repeated freeze thaw cycles. Antibodies should not be exposed to prolonged high temperatures.



EI24 Antibody 1

Western blot analysis of EI24 in rat liver tissue lysate with EI24 antibody at (A) 1 and (B) 2  $\mu\text{g/mL}$ .



EI24 Antibody 2

Immunohistochemistry of EI24 in rat liver tissue with EI24 antibody at 5  $\mu\text{g/mL}$ .

Disclaimer

Disclaimer	Optimal dilutions/concentrations should be determined by the end user. The information provided is a guideline for product use. This product is for research use only.
------------	--

For research use only. For additional information, visit ProSci's [Terms and Conditions Page](#).