

NETO1 Antibody

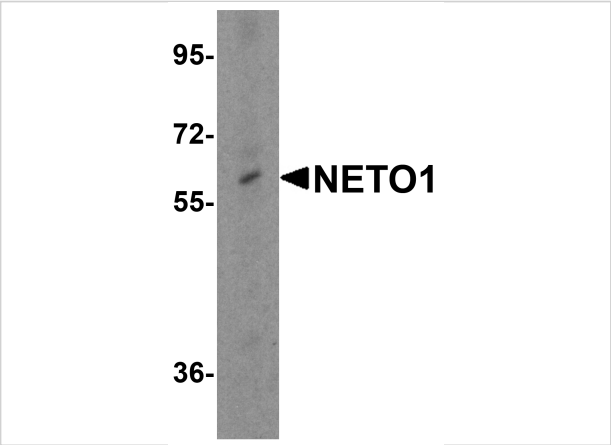
CATALOG NUMBER: 6469

Specifications

Host Species	Rabbit
Species Reactivity	Human, Mouse, Rat
Immunogen	NETO1 antibody was raised against an 18 amino acid synthetic peptide near the carboxy terminus of human NETO1. The immunogen is located within amino acids 350 - 400 of NETO1.
Conjugate	Unconjugated
Tested Applications	ELISA, IF, IHC-P, WB
User Note	Optimal dilutions for each application to be determined by the researcher.
Specificity	NETO1 antibody is predicted to not cross-react with other NETO protein family members.
Predicted Molecular Weight	Predicted: 60 kDa Observed: 60 kDa

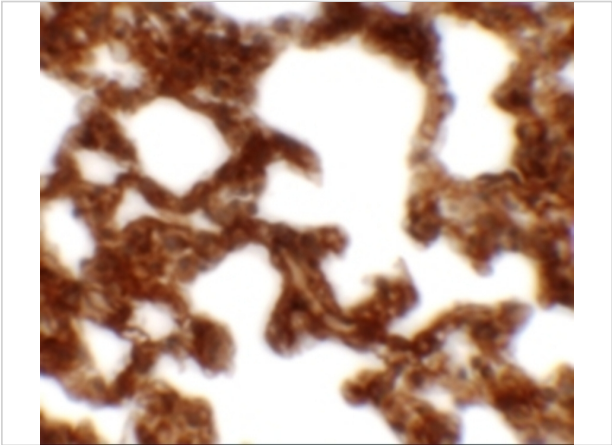
Properties

Purification	NETO1 Antibody is affinity chromatography purified via peptide column.
Clonality	Polyclonal
Isotype	IgG
Physical State	Liquid
Buffer	NETO1 Antibody is supplied in PBS containing 0.02% sodium azide.
Concentration	1 mg/mL
Storage Conditions	NETO1 antibody can be stored at 4°C for three months and -20°C, stable for up to one year. As with all antibodies care should be taken to avoid repeated freeze thaw cycles. Antibodies should not be exposed to prolonged high temperatures.



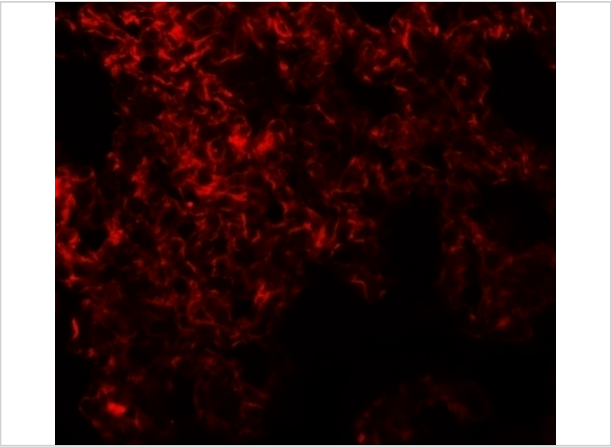
NETO1 Antibody 1

Western blot analysis of NETO1 in human brain tissue lysate with NETO1 antibody at 0.25 µg/mL.



NETO1 Antibody 2

Immunohistochemistry of NETO1 in rat lung tissue with NETO1 antibody at 2.5 µg/mL.



NETO1 Antibody 3

Immunofluorescence of NETO1 in rat lung tissue with NETO1 antibody at 20 µg/mL.

Disclaimer

Disclaimer	Optimal dilutions/concentrations should be determined by the end user. The information provided is a guideline for product use. This product is for research use only.
------------	--

For research use only. For additional information, visit ProSci's [Terms and Conditions Page](#).