

## IFTLD1 Antibody

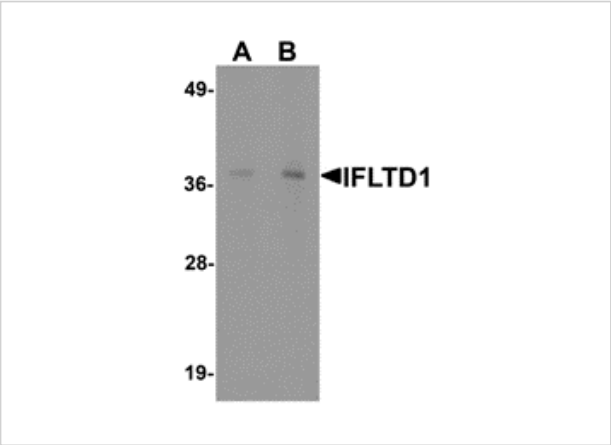
CATALOG NUMBER: 6447

### Specifications

Host Species	Rabbit
Species Reactivity	Human, Mouse, Rat
Immunogen	IFTLD1 antibody was raised against an 19 amino acid synthetic peptide near the center of human IFTLD1. The immunogen is located within amino acids 200 - 250 of IFTLD1.
Conjugate	Unconjugated
Tested Applications	ELISA, IHC-P, WB
User Note	Optimal dilutions for each application to be determined by the researcher.
Specificity	At least four isoforms of IFTLD1 are known to exist; this antibody will detect all but isoform 4

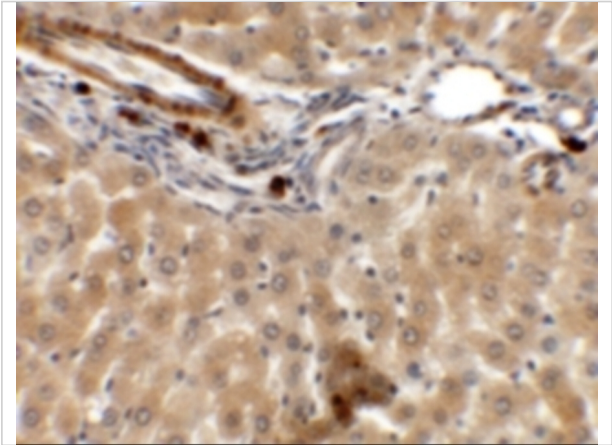
### Properties

Purification	IFTLD1 Antibody is affinity chromatography purified via peptide column.
Clonality	Polyclonal
Isotype	IgG
Physical State	Liquid
Buffer	IFTLD1 Antibody is supplied in PBS containing 0.02% sodium azide.
Concentration	1 mg/mL
Storage Conditions	IFTLD1 antibody can be stored at 4°C for three months and -20°C, stable for up to one year. As with all antibodies care should be taken to avoid repeated freeze thaw cycles. Antibodies should not be exposed to prolonged high temperatures.



IFTLD1 Antibody 1

Western blot analysis of IFTLD1 in rat liver tissue lysate with IFTLD1 antibody at (A) 1 and (B) 2 µg/mL.



IFTLD1 Antibody 2

Immunohistochemistry of IFTLD1 in rat liver tissue with IFTLD1 antibody at 5 µg/mL.

Disclaimer

Disclaimer	Optimal dilutions/concentrations should be determined by the end user. The information provided is a guideline for product use. This product is for research use only.
------------	--

For research use only. For additional information, visit ProSci's [Terms and Conditions Page](#).