

## EIG121 Antibody

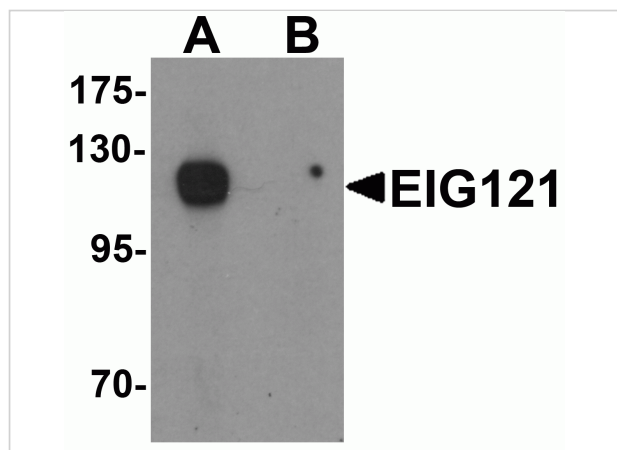
CATALOG NUMBER: 6443

### Specifications

Host Species	Rabbit
Species Reactivity	Human
Homology	Predicted species reactivity based on immunogen sequence: Mouse: (100%)
Immunogen	EIG121 antibody was raised against an 18 amino acid synthetic peptide near the carboxy terminus of human EIG121. The immunogen is located within the last 50 amino acids of EIG121.
Conjugate	Unconjugated
Tested Applications	ELISA, ICC, IF, WB
User Note	Optimal dilutions for each application to be determined by the researcher.
Specificity	At least four isoforms of EIG121 known to exist. EIG121 antibody is predicted to not cross-react with other UPF0577 protein family members.

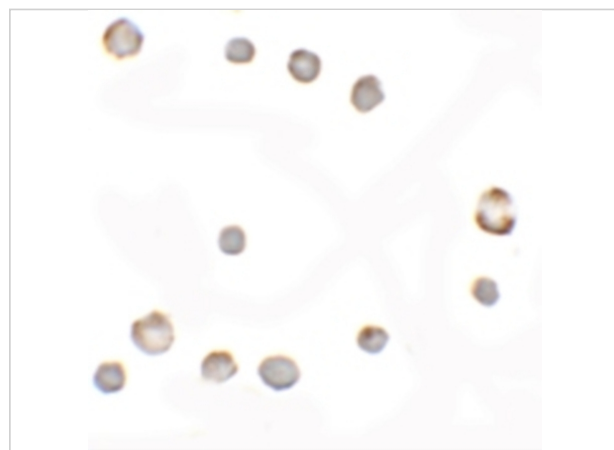
### Properties

Purification	EIG121 Antibody is affinity chromatography purified via peptide column.
Clonality	Polyclonal
Isotype	IgG
Physical State	Liquid
Buffer	EIG121 Antibody is supplied in PBS containing 0.02% sodium azide.
Concentration	1 mg/mL
Storage Conditions	EIG121 antibody can be stored at 4°C for three months and -20°C, stable for up to one year. As with all antibodies care should be taken to avoid repeated freeze thaw cycles. Antibodies should not be exposed to prolonged high temperatures.



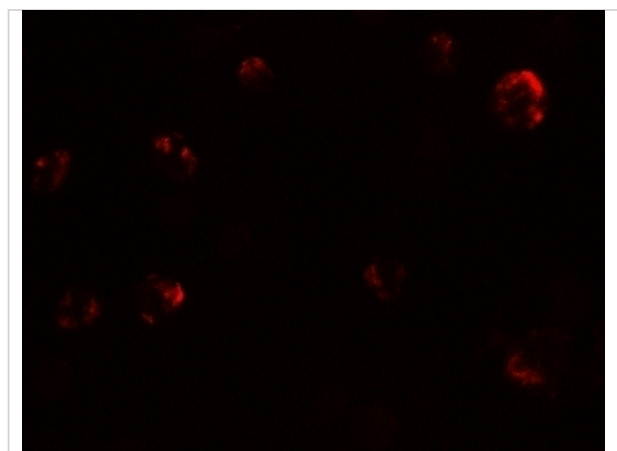
### EIG121 Antibody 1

Western blot analysis of EIG121 in MCF7 cell lysate with EIG121 antibody at 1 µg/mL in (A) the absence and (B) the presence of blocking peptide.



### EIG121 Antibody 2

Immunocytochemistry of EIG121 in MCF7 cells with EIG121 antibody at 5 µg/mL.



### EIG121 Antibody 3

Immunofluorescence of EIG121 in MCF7 cells with EIG121 antibody at 20 µg/mL.

## Disclaimer

#### Disclaimer

Optimal dilutions/concentrations should be determined by the end user. The information provided is a guideline for product use. This product is for research use only.

For research use only. For additional information, visit ProSci's [Terms and Conditions Page](#).