

L1TD1 Antibody

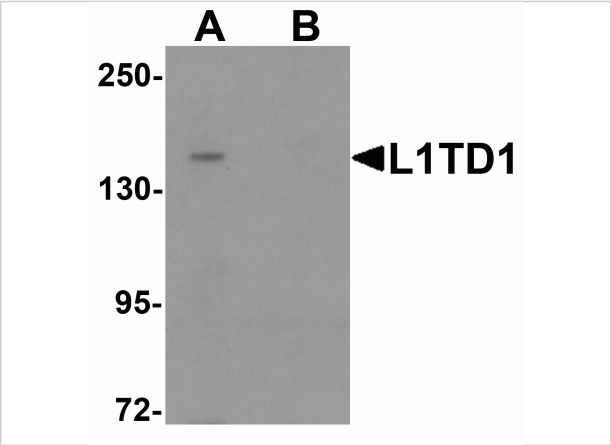
CATALOG NUMBER: 6439

Specifications

Host Species	Rabbit
Species Reactivity	Human
Homology	Predicted species reactivity based on immunogen sequence: Mouse: (76%)
Immunogen	L1TD1 antibody was raised against a 17 amino acid synthetic peptide near the carboxy terminus of human L1TD1. The immunogen is located within amino acids 690 - 740 of L1TD1.
Conjugate	Unconjugated
Tested Applications	ELISA, WB
User Note	Optimal dilutions for each application to be determined by the researcher.
Specificity	L1TD1 antibody is predicted to not cross-react with other ECAT protein family members

Properties

Purification	L1TD1 Antibody is affinity chromatography purified via peptide column.
Clonality	Polyclonal
Isotype	IgG
Physical State	Liquid
Buffer	L1TD1 Antibody is supplied in PBS containing 0.02% sodium azide.
Concentration	1 mg/mL
Storage Conditions	L1TD1 antibody can be stored at 4°C for three months and -20°C, stable for up to one year. As with all antibodies care should be taken to avoid repeated freeze thaw cycles. Antibodies should not be exposed to prolonged high temperatures.



L1TD1 Antibody 1

Western blot analysis of L1TD1 in Jurkat cell lysate with L1TD1 antibody at 1 µg/mL in (A) the absence and (B) the presence of blocking peptide.

Disclaimer

Disclaimer	Optimal dilutions/concentrations should be determined by the end user. The information provided is a guideline for product use. This product is for research use only.
------------	--

For research use only. For additional information, visit ProSci's [Terms and Conditions Page](#).