

## SPRYD5 Antibody

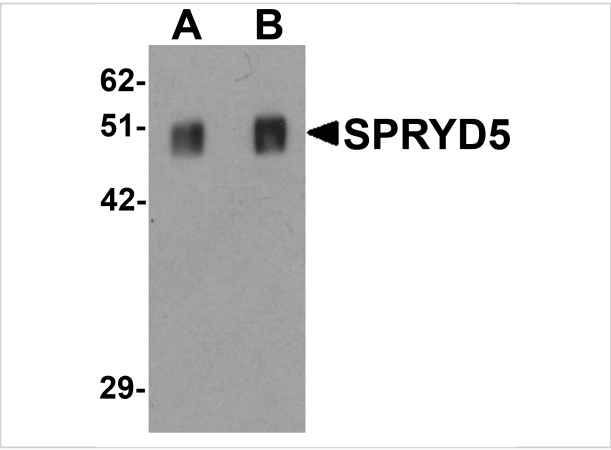
CATALOG NUMBER: 6409

### Specifications

Host Species	Rabbit
Species Reactivity	Human, Mouse, Rat
Immunogen	SPRYD5 antibody was raised against an 18 amino acid synthetic peptide near the carboxy terminus of human SPRYD5. The immunogen is located within amino acids 350 - 400 of SPRYD5.
Conjugate	Unconjugated
Tested Applications	ELISA, IF, IHC-P, WB
User Note	Optimal dilutions for each application to be determined by the researcher.
Specificity	SPRYD5 antibody is predicted to not cross-react with other SPRYD protein family members. At least two isoforms of SPRYD5 are known to exist; this antibody will detect both isoforms

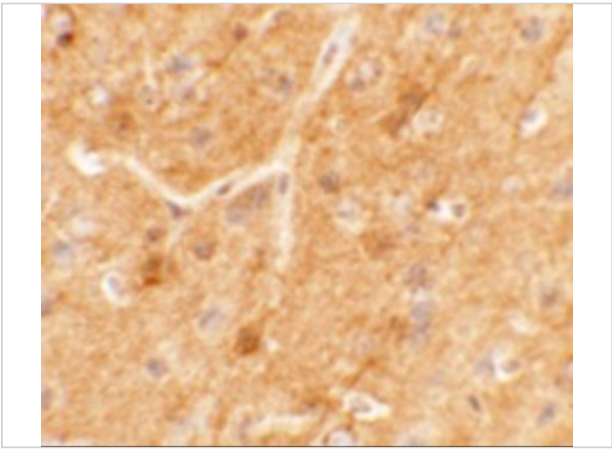
### Properties

Purification	SPRYD5 Antibody is affinity chromatography purified via peptide column.
Clonality	Polyclonal
Isotype	IgG
Physical State	Liquid
Buffer	SPRYD5 Antibody is supplied in PBS containing 0.02% sodium azide.
Concentration	1 mg/mL
Storage Conditions	SPRYD5 antibody can be stored at 4°C for three months and -20°C, stable for up to one year. As with all antibodies care should be taken to avoid repeated freeze thaw cycles. Antibodies should not be exposed to prolonged high temperatures.



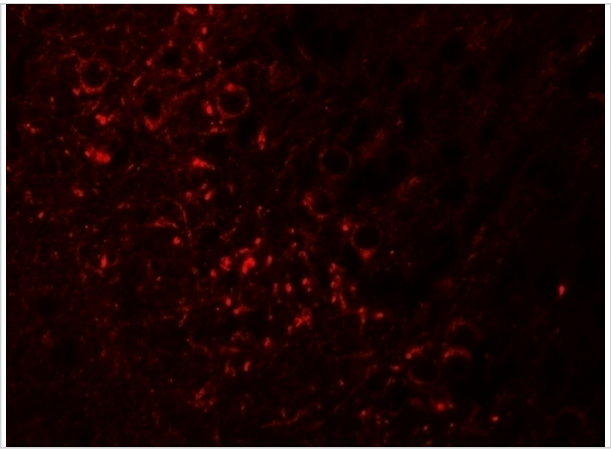
SPRYD5 Antibody 1

Western blot analysis of SPRYD5 in rat brain tissue lysate with SPRYD5 antibody at (A) 0.25 and (B) 0.5  $\mu\text{g/mL}$ .



SPRYD5 Antibody 2

Immunohistochemistry of SPRYD5 in mouse brain tissue with SPRYD5 antibody at 5  $\mu\text{g/mL}$ .



SPRYD5 Antibody 3

Immunofluorescence of SPRYD5 in mouse brain tissue with SPRYD5 antibody at 20  $\mu\text{g/mL}$ .

Disclaimer

Disclaimer	Optimal dilutions/concentrations should be determined by the end user. The information provided is a guideline for product use. This product is for research use only.
------------	--

For research use only. For additional information, visit ProSci's [Terms and Conditions Page](#).