

TYW2 Antibody

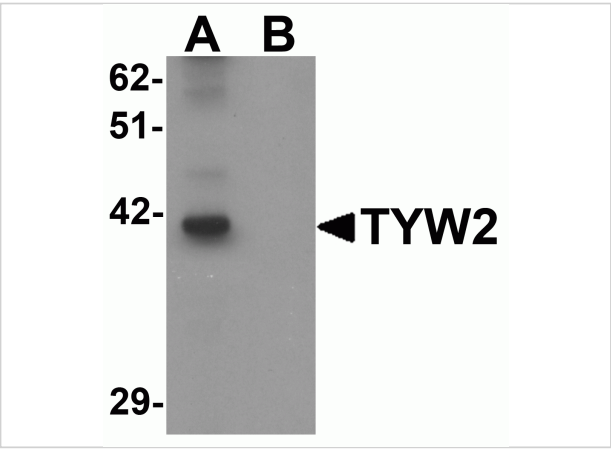
CATALOG NUMBER: 6375

Specifications

Host Species	Rabbit
Species Reactivity	Human, Mouse
Homology	Predicted species reactivity based on immunogen sequence: Bovine: (74%)
Immunogen	TYW2 antibody was raised against a 19 amino acid synthetic peptide near the amino terminus of human TYW2. The immunogen is located within the first 50 amino acids of TYW2.
Conjugate	Unconjugated
Tested Applications	ELISA, ICC, WB
User Note	Optimal dilutions for each application to be determined by the researcher.
Specificity	TYW2 antibody is predicted to not cross-react with other TYW protein family members. At least two isoforms of TYW2 are known to exist; this antibody will detect both isoforms

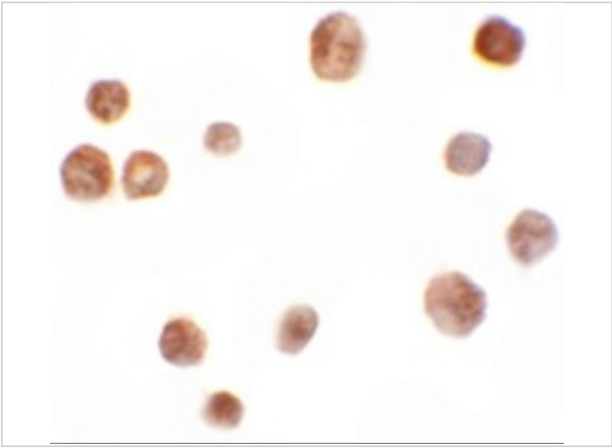
Properties

Purification	TYW2 Antibody is affinity chromatography purified via peptide column.
Clonality	Polyclonal
Isotype	IgG
Physical State	Liquid
Buffer	TYW2 Antibody is supplied in PBS containing 0.02% sodium azide.
Concentration	1 mg/mL
Storage Conditions	TYW2 antibody can be stored at 4 °C, stable for one year. As with all antibodies care should be taken to avoid repeated freeze thaw cycles. Antibodies should not be exposed to prolonged high temperatures.



TYW2 Antibody 1

Western blot analysis of TYW2 in K562 cell lysate with TYW2 antibody at 0.5 µg/mL in (A) the absence and (B) the presence of blocking peptide.



TYW2 Antibody 2

Immunocytochemistry of TYW2 in K562 cells with TYW2 antibody at 10 µg/mL.

Disclaimer

Disclaimer	Optimal dilutions/concentrations should be determined by the end user. The information provided is a guideline for product use. This product is for research use only.
-------------------	--

For research use only. For additional information, visit ProSci's [Terms and Conditions Page](#).