

Anosmin Antibody

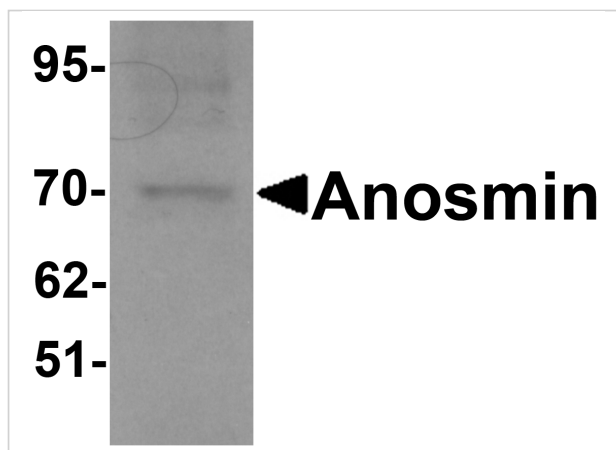
CATALOG NUMBER: 6367

Specifications

Host Species	Rabbit
Species Reactivity	Human
Immunogen	Anosmin antibody was raised against an 18 amino acid synthetic peptide near the center of human Anosmin. The immunogen is located within amino acids 430 - 480 of Anosmin.
Conjugate	Unconjugated
Tested Applications	ELISA, ICC, IF, WB
User Note	Optimal dilutions for each application to be determined by the researcher.

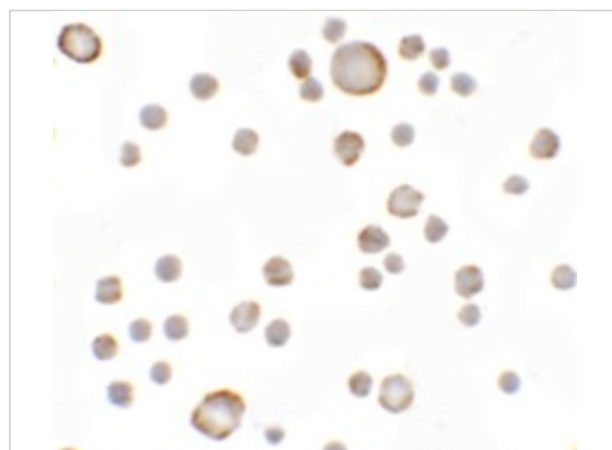
Properties

Purification	Anosmin Antibody is affinity chromatography purified via peptide column.
Clonality	Polyclonal
Isotype	IgG
Physical State	Liquid
Buffer	Anosmin Antibody is supplied in PBS containing 0.02% sodium azide.
Concentration	1 mg/mL
Storage Conditions	Anosmin antibody can be stored at 4 °C, stable for one year. As with all antibodies care should be taken to avoid repeated freeze thaw cycles. Antibodies should not be exposed to prolonged high temperatures.



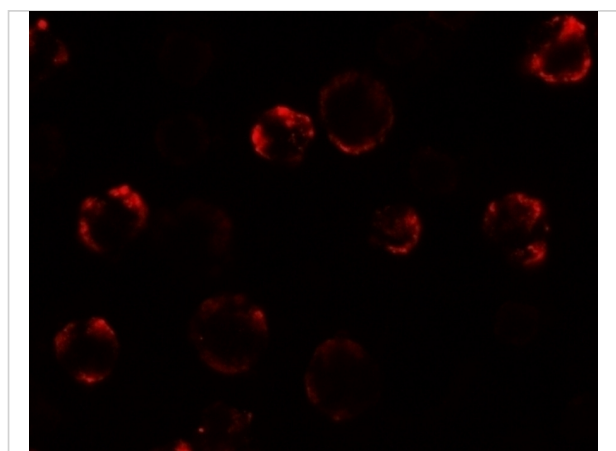
Anosmin Antibody 1

Western blot analysis of Anosmin in MCF7 cell lysate with Anosmin antibody at 1 µg/mL.



Anosmin Antibody 2

Immunocytochemistry of Anosmin in MCF7 cells with Anosmin antibody at 5 µg/mL.



Anosmin Antibody 3

Immunofluorescence of Anosmin in MCF7 cells with Anosmin antibody at 20 µg/mL.

Disclaimer

Disclaimer

Optimal dilutions/concentrations should be determined by the end user. The information provided is a guideline for product use. This product is for research use only.

For research use only. For additional information, visit ProSci's [Terms and Conditions Page](#).