

SPT1 Antibody

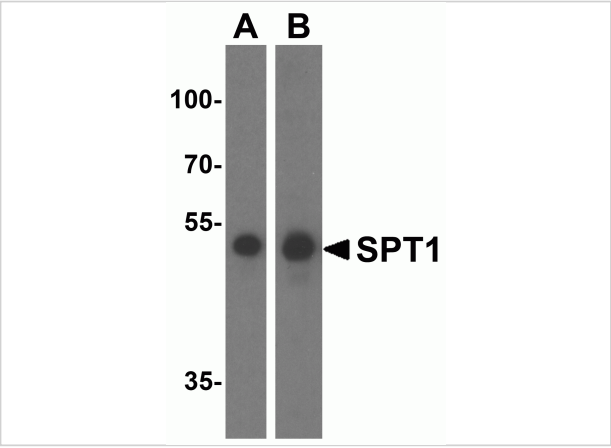
CATALOG NUMBER: 6303

Specifications

| | |
|----------------------------|---|
| Host Species | Rabbit |
| Species Reactivity | Human |
| Homology | Predicted species reactivity based on immunogen sequence: Mouse: (88%), Bovine: (76%) |
| Immunogen | SPT1 antibody was raised against a 17 amino acid synthetic peptide near the carboxy terminus of human SPT1. The immunogen is located within amino acids 380 - 430 of SPT1. |
| Conjugate | Unconjugated |
| Tested Applications | ELISA, IHC-P, WB |
| User Note | Optimal dilutions for each application to be determined by the researcher. |
| Specificity | At least two isoforms of SPT1 are known to exist; this antibody will detect only isoform a. SPT1 antibody is predicted to not cross-react with SPT2. |
| Predicted Molecular Weight | Predicted: 51 kDa Observed: 51 kDa |

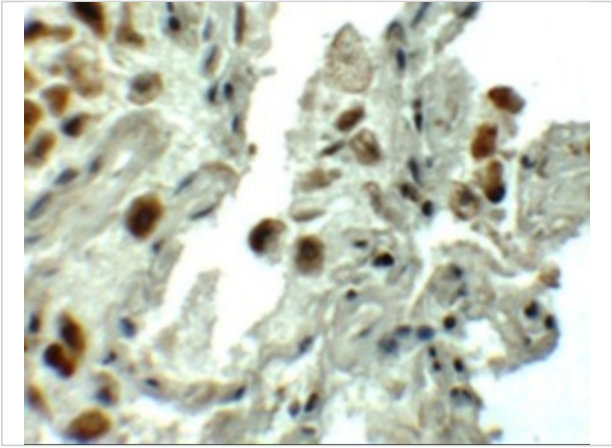
Properties

| | |
|--------------------|--|
| Purification | SPT1 Antibody is affinity chromatography purified via peptide column. |
| Clonality | Polyclonal |
| Isotype | IgG |
| Physical State | Liquid |
| Buffer | SPT1 Antibody is supplied in PBS containing 0.02% sodium azide. |
| Concentration | 1 mg/mL |
| Storage Conditions | SPT1 antibody can be stored at 4°C for three months and -20°C, stable for up to one year. As with all antibodies care should be taken to avoid repeated freeze thaw cycles. Antibodies should not be exposed to prolonged high temperatures. |



SPT1 Antibody 1

Western blot analysis of SPT1 in (A) A549 and (B) HeLa cell lysate with SPT1 antibody at 1 µg/mL.



SPT1 Antibody 2

Immunohistochemistry of SPT1 in human lung tissue with SPT1 antibody at 5 µg/mL.

Disclaimer

| | |
|------------|--|
| Disclaimer | Optimal dilutions/concentrations should be determined by the end user. The information provided is a guideline for product use. This product is for research use only. |
|------------|--|

For research use only. For additional information, visit ProSci's [Terms and Conditions Page](#).