

## ROCK1 Antibody

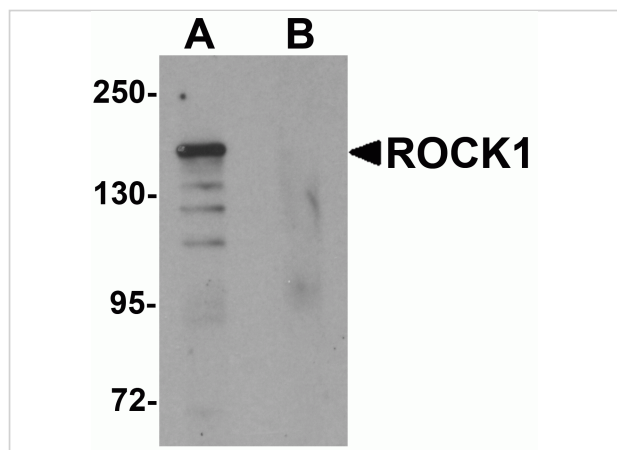
CATALOG NUMBER: 6295

### Specifications

Host Species	Rabbit
Species Reactivity	Human, Mouse, Rat
Homology	Predicted species reactivity based on immunogen sequence: Rabbit: (93%)
Immunogen	ROCK1 antibody was raised against a 15 amino acid synthetic peptide near the amino terminus of human ROCK1. The immunogen is located within the first 50 amino acids of ROCK1.
Conjugate	Unconjugated
Tested Applications	ELISA, ICC, IF, WB
User Note	Optimal dilutions for each application to be determined by the researcher.
Specificity	ROCK1 antibody is predicted to not cross-react with other ROCK protein family members.

### Properties

Purification	ROCK1 Antibody is affinity chromatography purified via peptide column.
Clonality	Polyclonal
Isotype	IgG
Physical State	Liquid
Buffer	ROCK1 Antibody is supplied in PBS containing 0.02% sodium azide.
Concentration	1 mg/mL
Storage Conditions	ROCK1 antibody can be stored at 4°C for three months and -20°C, stable for up to one year. As with all antibodies care should be taken to avoid repeated freeze thaw cycles. Antibodies should not be exposed to prolonged high temperatures.



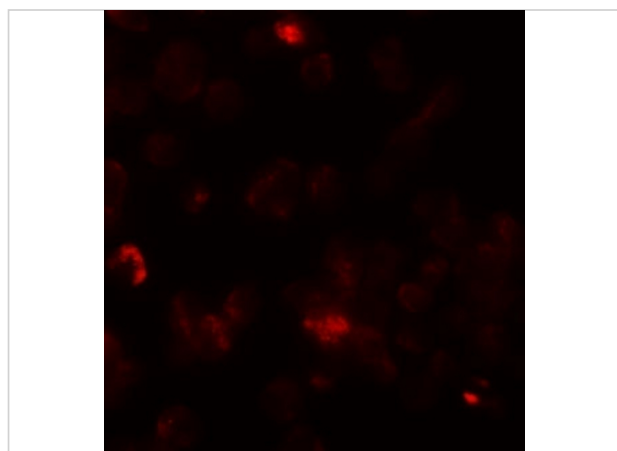
### ROCK1 Antibody 1

Western blot analysis of ROCK1 in 293 cell lysate with ROCK1 antibody at 1 µg/mL in (A) the absence and (B) the presence of blocking peptide.



### ROCK1 Antibody 2

Immunocytochemistry of ROCK1 in 293 cells with ROCK1 antibody at 10 µg/mL.



### ROCK1 Antibody 3

Immunofluorescence of ROCK1 in 293 cells with ROCK1 antibody at 20 µg/mL.

## Disclaimer

#### Disclaimer

Optimal dilutions/concentrations should be determined by the end user. The information provided is a guideline for product use. This product is for research use only.

For research use only. For additional information, visit ProSci's [Terms and Conditions Page](#).