

## EZH1 Antibody

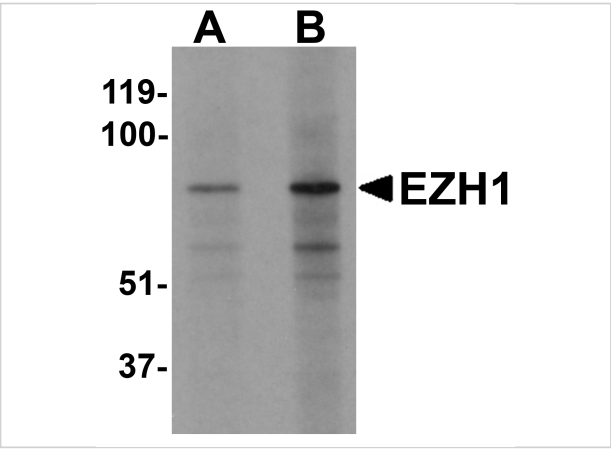
CATALOG NUMBER: 6261

### Specifications

Host Species	Rabbit
Species Reactivity	Human, Mouse, Rat
Homology	Predicted species reactivity based on immunogen sequence: Bovine: (100%)
Immunogen	EZH1 antibody was raised against an 18 amino acid synthetic peptide near the amino terminus of human EZH1. The immunogen is located within amino acids 180 - 230 of EZH1.
Conjugate	Unconjugated
Tested Applications	ELISA, IF, IHC-P, WB
User Note	Optimal dilutions for each application to be determined by the researcher.
Specificity	Multiple isoforms of EZH1 are known to exist. EZH1 antibody is predicted to not cross-react with EZH2

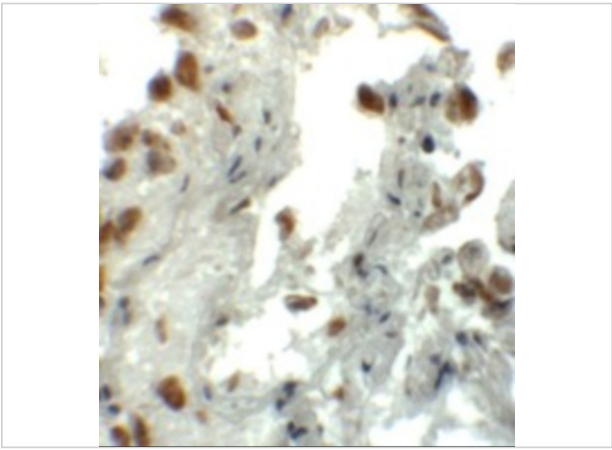
### Properties

Purification	EZH1 Antibody is affinity chromatography purified via peptide column.
Clonality	Polyclonal
Isotype	IgG
Physical State	Liquid
Buffer	EZH1 Antibody is supplied in PBS containing 0.02% sodium azide.
Concentration	1 mg/mL
Storage Conditions	EZH1 antibody can be stored at 4°C for three months and -20°C, stable for up to one year. As with all antibodies care should be taken to avoid repeated freeze thaw cycles. Antibodies should not be exposed to prolonged high temperatures.



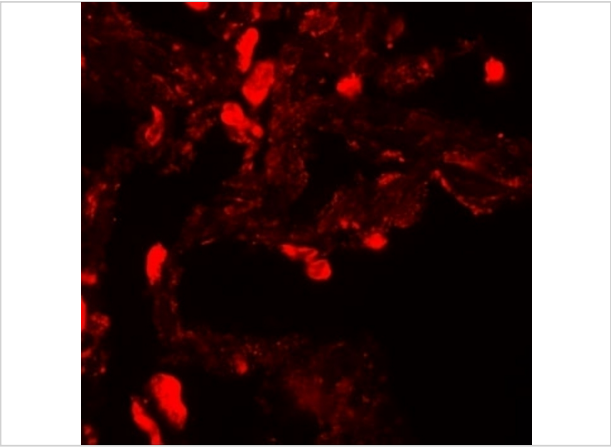
**EZH1 Antibody 1**

Western blot analysis of EZH1 in mouse lung tissue lysate with EZH1 antibody at (A) 1 and (B) 2 µg/mL



**EZH1 Antibody 2**

Immunohistochemistry of EZH1 in human lung tissue with EZH1 antibody at 5 µg/mL.



**EZH1 Antibody 3**

Immunofluorescence of EZH1 in human lung tissue with EZH1 antibody at 20 µg/mL.

**Disclaimer**

<b>Disclaimer</b>	Optimal dilutions/concentrations should be determined by the end user. The information provided is a guideline for product use. This product is for research use only.
-------------------	--

For research use only. For additional information, visit ProSci's [Terms and Conditions Page](#).