

SLAMF1 Antibody

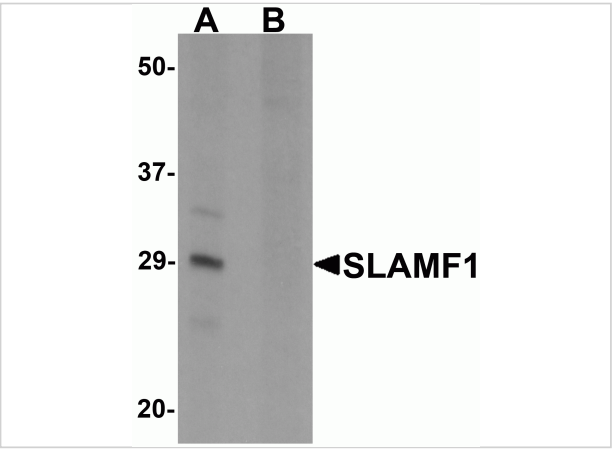
CATALOG NUMBER: 6247

Specifications

Host Species	Rabbit
Species Reactivity	Human, Mouse, Rat
Immunogen	SLAMF1 antibody was raised against a 15 amino acid synthetic peptide near the amino terminus of human SLAMF1. The immunogen is located within amino acids 30 - 80 of SLAMF1.
Conjugate	Unconjugated
Tested Applications	ELISA, IF, IHC-P, WB
User Note	Optimal dilutions for each application to be determined by the researcher.
Specificity	4 isoforms of SLAMF1 are known to exist; this antibody will is predicted to recognize all 4 isoforms. SLAMF1 antibody is predicted to not cross-react with other SLAM protein family members.

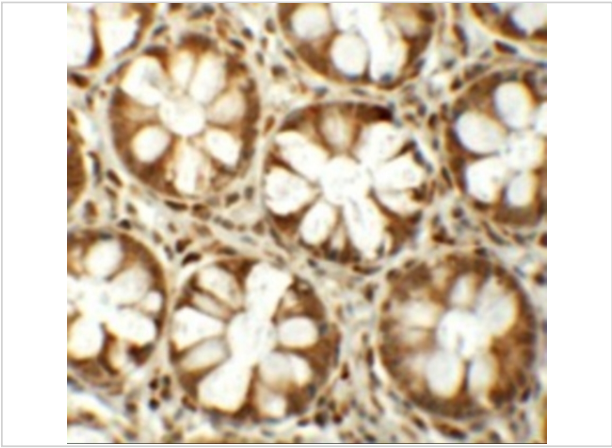
Properties

Purification	SLAMF1 Antibody is affinity chromatography purified via peptide column.
Clonality	Polyclonal
Isotype	IgG
Physical State	Liquid
Buffer	SLAMF1 Antibody is supplied in PBS containing 0.02% sodium azide.
Concentration	1 mg/mL
Storage Conditions	SLAMF1 antibody can be stored at 4°C up to one year. Antibodies should not be exposed to prolonged high temperatures.



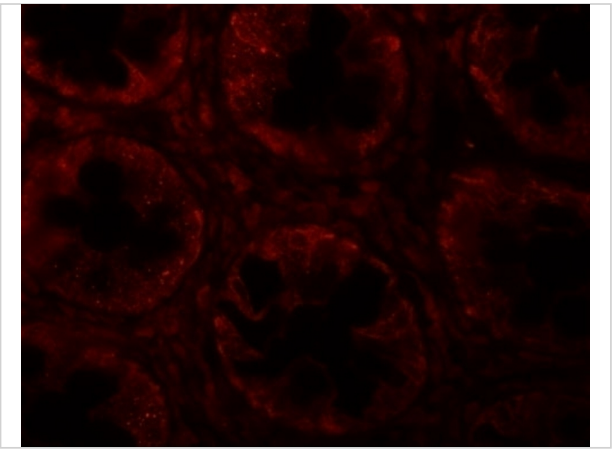
SLAMF1 Antibody 1

Western blot analysis of SLAMF1 in rat colon tissue lysate with SLAMF1 antibody at 1 µg/mL in (A) the absence and (B) the presence of blocking peptide.



SLAMF1 Antibody 2

Immunohistochemistry of SLAMF1 in human colon tissue with SLAMF1 antibody at 5 µg/mL.



SLAMF1 Antibody 3

Immunofluorescence of SLAMF1 in human colon tissue with SLAMF1 antibody at 20 µg/mL.

Disclaimer

Disclaimer	Optimal dilutions/concentrations should be determined by the end user. The information provided is a guideline for product use. This product is for research use only.
------------	--

For research use only. For additional information, visit ProSci's [Terms and Conditions Page](#).