

ZIMP7 Antibody

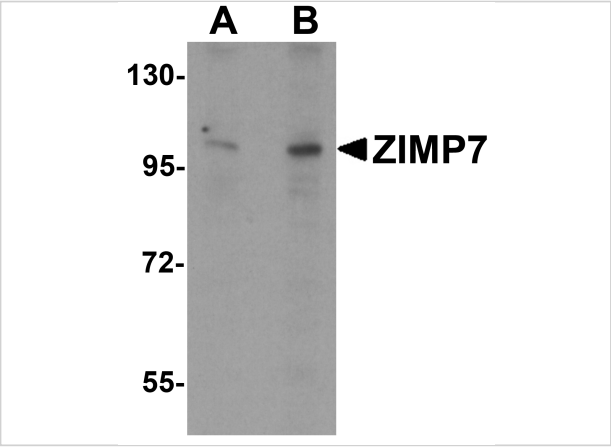
CATALOG NUMBER: 6235

Specifications

Host Species	Rabbit
Species Reactivity	Human, Mouse
Immunogen	ZIMP7 antibody was raised against a 17 amino acid synthetic peptide near the center of human ZIMP7. The immunogen is located within amino acids 270 - 320 of ZIMP7.
Conjugate	Unconjugated
Tested Applications	ELISA, WB
User Note	Optimal dilutions for each application to be determined by the researcher.
Specificity	At least four isoforms are known to exist. ZIMP7 antibody is predicted to not cross-react with other PIAS protein family members.

Properties

Purification	ZIMP7 Antibody is affinity chromatography purified via peptide column.
Clonality	Polyclonal
Isotype	IgG
Physical State	Liquid
Buffer	ZIMP7 Antibody is supplied in PBS containing 0.02% sodium azide.
Concentration	1 mg/mL
Storage Conditions	ZIMP7 antibody can be stored at 4°C for three months and -20°C, stable for up to one year. As with all antibodies care should be taken to avoid repeated freeze thaw cycles. Antibodies should not be exposed to prolonged high temperatures.



ZIMP7 Antibody 1

Western blot analysis of ZIMP7 in A20 cell lysate with ZIMP7 antibody at (A) 0.25 µg/ml and (B) 0.5 µg/mL.

Disclaimer

Disclaimer	Optimal dilutions/concentrations should be determined by the end user. The information provided is a guideline for product use. This product is for research use only.
-------------------	--

For research use only. For additional information, visit ProSci's [Terms and Conditions Page](#).