



ProSci Incorporated  
12170 Flint Place  
Poway, CA 92064, USA  
prosci-inc.com

P: +1 (888) 513-9525  
Local: +1 (858) 513-2638  
Fax: +1 (858) 513-2692

customercare@prosci-inc.com  
techsupport@prosci-inc.com

## MYOZAP Antibody

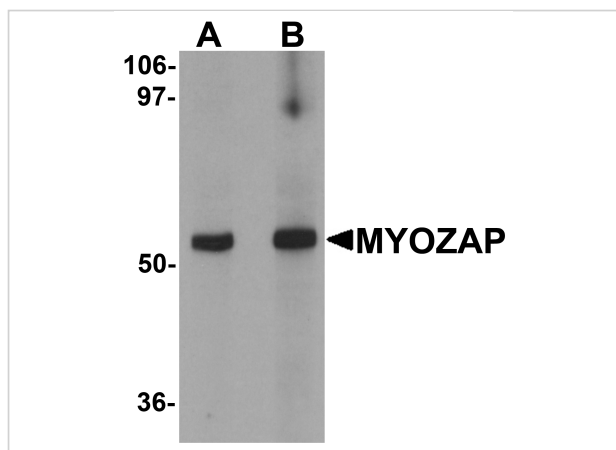
CATALOG NUMBER: 6223

### Specifications

Host Species	Rabbit
Species Reactivity	Human, Mouse, Rat
Immunogen	MYOZAP antibody was raised against a 18 amino acid synthetic peptide near the carboxy terminus of human MYOZAP. The immunogen is located within amino acids 400 - 450 of MYOZAP.
Conjugate	Unconjugated
Tested Applications	ELISA, IF, IHC-P, WB
User Note	Optimal dilutions for each application to be determined by the researcher.
Specificity	Multiple isoforms of MYOZAP are known to exist.

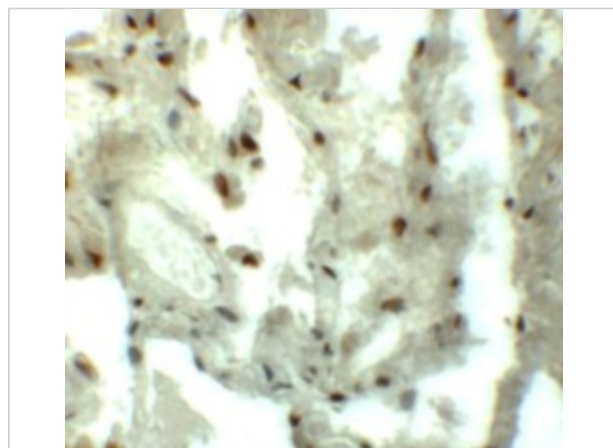
### Properties

Purification	MYOZAP Antibody is affinity chromatography purified via peptide column.
Clonality	Polyclonal
Isotype	IgG
Physical State	Liquid
Buffer	MYOZAP Antibody is supplied in PBS containing 0.02% sodium azide.
Concentration	1 mg/mL
Storage Conditions	MYOZAP antibody can be stored at 4°C for three months and -20°C, stable for up to one year. As with all antibodies care should be taken to avoid repeated freeze thaw cycles. Antibodies should not be exposed to prolonged high temperatures.



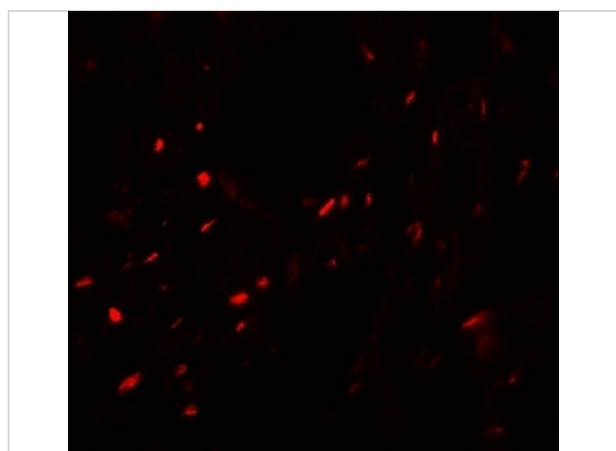
## MYOZAP Antibody 1

Western blot analysis of MYOZAP in rat kidney tissue lysate with MYOZAP antibody at (A) 1 and (B) 2  $\mu\text{g/mL}$ .



## MYOZAP Antibody 2

Immunohistochemistry of MYOZAP in human lung tissue with MYOZAP antibody at 5  $\mu\text{g/mL}$ .



## MYOZAP Antibody 3

Immunofluorescence of MYOZAP in human lung tissue with MYOZAP antibody at 20  $\mu\text{g/mL}$ .

## Disclaimer

### Disclaimer

Optimal dilutions/concentrations should be determined by the end user. The information provided is a guideline for product use. This product is for research use only.

For research use only. For additional information, visit ProSci's [Terms and Conditions Page](#).