

## LRRFIP2 Antibody

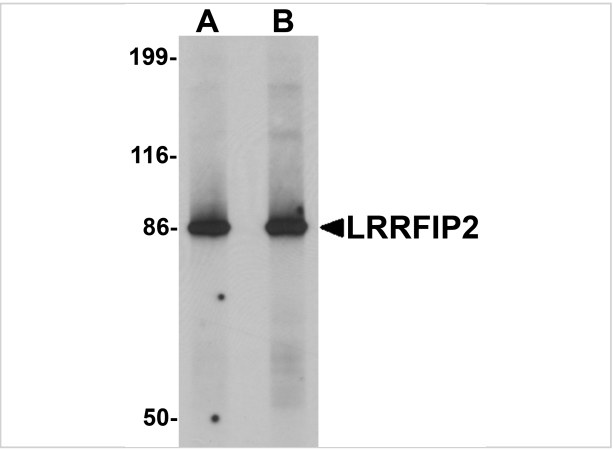
CATALOG NUMBER: 6221

### Specifications

Host Species	Rabbit
Species Reactivity	Human, Mouse, Rat
Homology	Predicted species reactivity based on immunogen sequence: Bovine: (100%)
Immunogen	LRRFIP2 antibody was raised against a 17 amino acid synthetic peptide near the carboxy terminus of human LRRFIP2. The immunogen is located within amino acids 620 - 670 of LRRFIP2.
Conjugate	Unconjugated
Tested Applications	ELISA, IF, IHC-P, WB
User Note	Optimal dilutions for each application to be determined by the researcher.
Specificity	Three isoforms of LRRFIP2 are known to exist; this antibody will recognize all three. LRRFIP2 antibody is predicted to not cross-react with other LRRFIP family members.

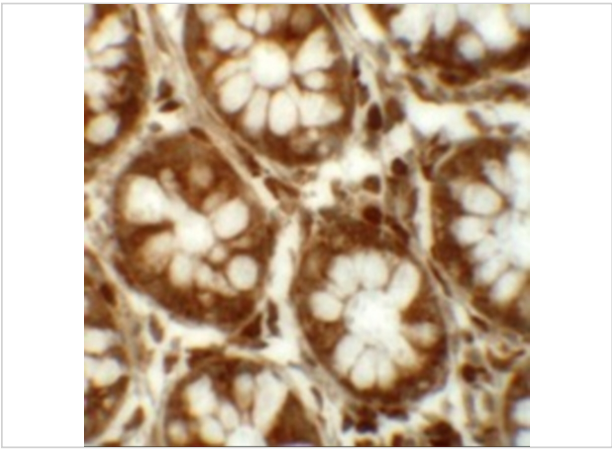
### Properties

Purification	LRRFIP2 Antibody is affinity chromatography purified via peptide column.
Clonality	Polyclonal
Isotype	IgG
Physical State	Liquid
Buffer	LRRFIP2 Antibody is supplied in PBS containing 0.02% sodium azide.
Concentration	1 mg/mL
Storage Conditions	LRRFIP2 antibody can be stored at 4°C for three months and -20°C, stable for up to one year. As with all antibodies care should be taken to avoid repeated freeze thaw cycles. Antibodies should not be exposed to prolonged high temperatures.



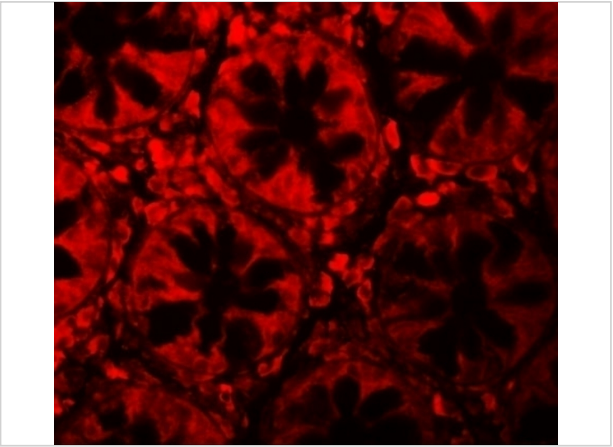
LRRFIP2 Antibody 1

Western blot analysis of LRRFIP2 in rat colon tissue lysate with LRRFIP2 antibody at (A) 0.5 and (B) 1  $\mu$ g/mL.



LRRFIP2 Antibody 2

Immunohistochemistry of LRRFIP2 in human colon tissue with LRRFIP2 antibody at 5  $\mu$ g/mL.



LRRFIP2 Antibody 3

Immunofluorescence of LRRFIP2 in human colon tissue with LRRFIP2 antibody at 20  $\mu$ g/mL.

Disclaimer

Disclaimer	Optimal dilutions/concentrations should be determined by the end user. The information provided is a guideline for product use. This product is for research use only.
------------	--

For research use only. For additional information, visit ProSci's [Terms and Conditions Page](#).