

RHAMM Antibody

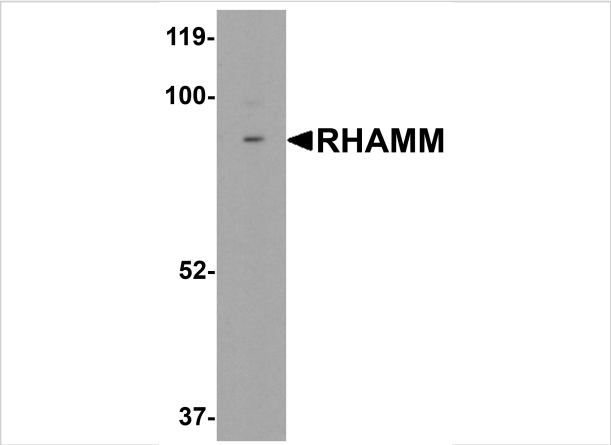
CATALOG NUMBER: 6189

Specifications

Host Species	Rabbit
Species Reactivity	Human, Mouse, Rat
Immunogen	RHAMM antibody was raised against a 18 amino acid synthetic peptide near the amino terminus of human RHAMM. The immunogen is located within amino acids 80 - 130 of RHAMM.
Conjugate	Unconjugated
Tested Applications	ELISA, IF, IHC-P, WB
User Note	Optimal dilutions for each application to be determined by the researcher.

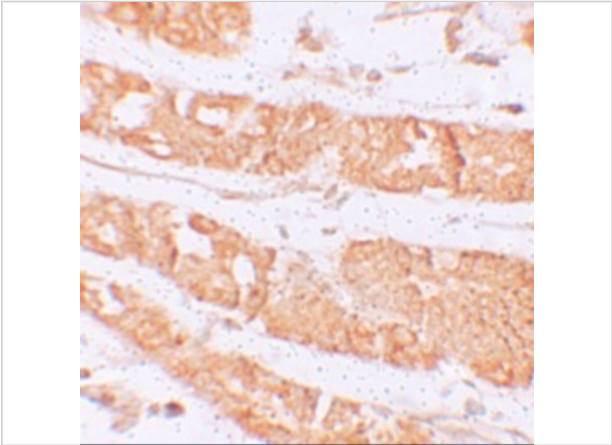
Properties

Purification	RHAMM Antibody is affinity chromatography purified via peptide column.
Clonality	Polyclonal
Isotype	IgG
Physical State	Liquid
Buffer	RHAMM Antibody is supplied in PBS containing 0.02% sodium azide.
Concentration	1 mg/mL
Storage Conditions	RHAMM antibody can be stored at 4°C for three months and -20°C, stable for up to one year. As with all antibodies care should be taken to avoid repeated freeze thaw cycles. Antibodies should not be exposed to prolonged high temperatures.



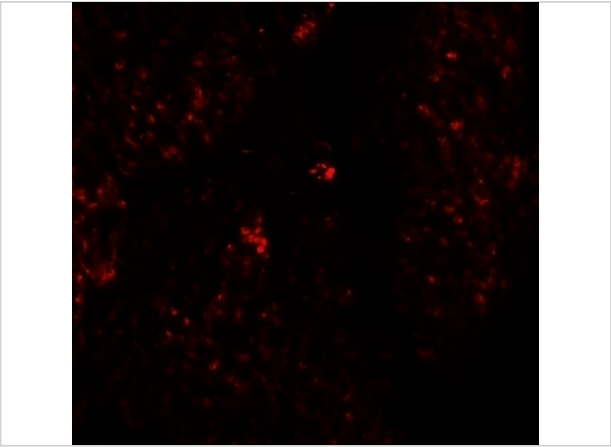
RHAMM Antibody 1

Western blot analysis of RHAMM in rat stomach tissue lysate with RHAMM antibody at 0.5 µg/mL.



RHAMM Antibody 2

Immunohistochemistry of RHAMM in human stomach tissue with RHAMM antibody at 2.5 µg/mL.



RHAMM Antibody 3

Immunofluorescence of RHAMM in human stomach tissue with RHAM antibody at 20 µg/mL.

Disclaimer

Disclaimer	Optimal dilutions/concentrations should be determined by the end user. The information provided is a guideline for product use. This product is for research use only.
-------------------	--

For research use only. For additional information, visit ProSci's [Terms and Conditions Page](#).