

RBM35A Antibody

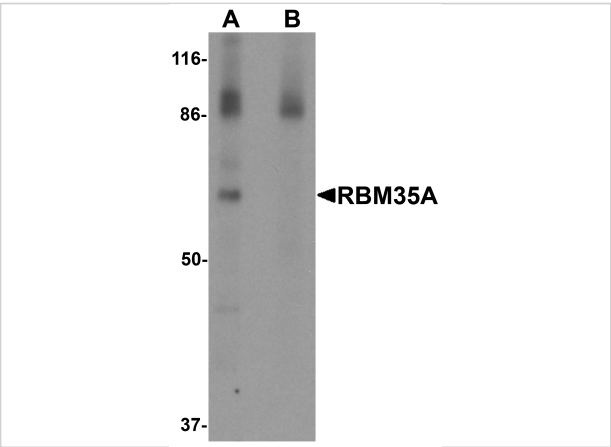
CATALOG NUMBER: 6185

Specifications

Host Species	Rabbit
Species Reactivity	Human, Mouse, Rat
Immunogen	RBM35A antibody was raised against a 18 amino acid synthetic peptide near the amino terminus of human RBM35A. The immunogen is located within amino acids 30 - 80 of RBM35A.
Conjugate	Unconjugated
Tested Applications	ELISA, IF, IHC-P, WB
User Note	Optimal dilutions for each application to be determined by the researcher.
Specificity	RBM35A antibody is predicted to not cross-react with other RBM35/ESRP family members. At least five isoforms of RBM35A are known to exist; this antibody will detect all five.

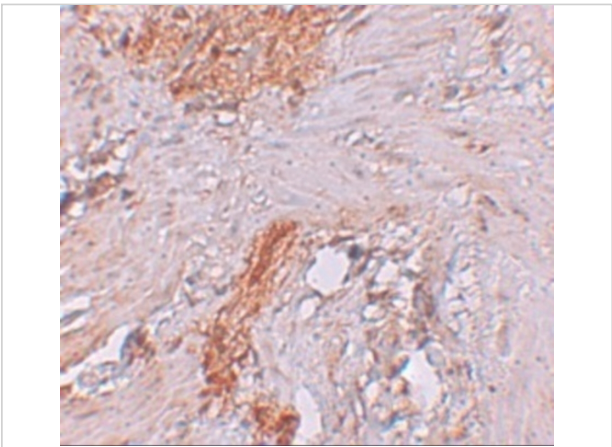
Properties

Purification	RBM35A Antibody is affinity chromatography purified via peptide column.
Clonality	Polyclonal
Isotype	IgG
Physical State	Liquid
Buffer	RBM35A Antibody is supplied in PBS containing 0.02% sodium azide.
Concentration	1 mg/mL
Storage Conditions	RBM35A antibody can be stored at 4°C for three months and -20°C, stable for up to one year. As with all antibodies care should be taken to avoid repeated freeze thaw cycles. Antibodies should not be exposed to prolonged high temperatures.



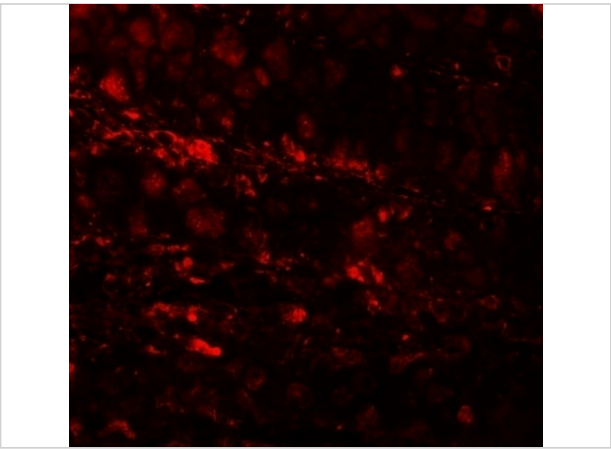
RBM35A Antibody 1

Western blot analysis of RBM35A in rat colon tissue lysate with RBM35A antibody at 0.5 µg/mL in (A) the absence and (B) the presence of blocking peptide.



RBM35A Antibody 2

Immunohistochemistry of RBM35A in human colon tissue with RBM35A antibody at 2.5 µg/mL.



RBM35A Antibody 3

Immunofluorescence of RBM35A in human colon tissue cells with RBM35A antibody at 20 µg/mL.

Disclaimer

Disclaimer	Optimal dilutions/concentrations should be determined by the end user. The information provided is a guideline for product use. This product is for research use only.
-------------------	--

For research use only. For additional information, visit ProSci's [Terms and Conditions Page](#).