

N4BP1 Antibody

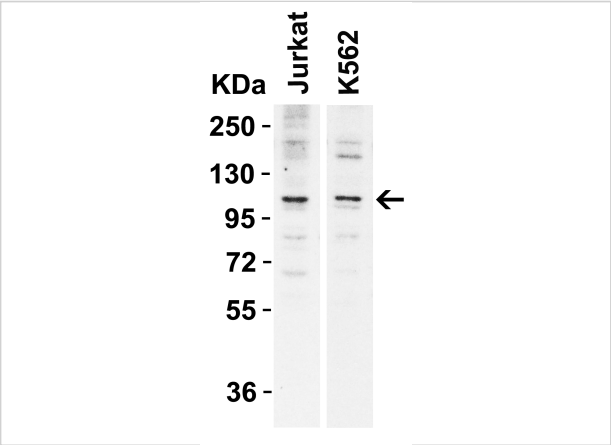
CATALOG NUMBER: 6175

Specifications

Host Species	Rabbit
Species Reactivity	Human, Mouse, Rat
Immunogen	N4BP1 antibody was raised against a 18 amino acid synthetic peptide near the amino terminus of human N4BP1. The immunogen is located within the first 50 amino acids of N4BP1.
Conjugate	Unconjugated
Tested Applications	ELISA, ICC, IF, WB
User Note	Optimal dilutions for each application to be determined by the researcher.
Specificity	At least three isoforms of N4BP1 are known to exist; this antibody will only detect the longest isoform.

Properties

Purification	N4BP1 Antibody is affinity chromatography purified via peptide column.
Clonality	Polyclonal
Isotype	IgG
Physical State	Liquid
Buffer	N4BP1 Antibody is supplied in PBS containing 0.02% sodium azide.
Concentration	1 mg/mL
Storage Conditions	N4BP1 antibody can be stored at 4°C for three months and -20°C, stable for up to one year. As with all antibodies care should be taken to avoid repeated freeze thaw cycles. Antibodies should not be exposed to prolonged high temperatures.



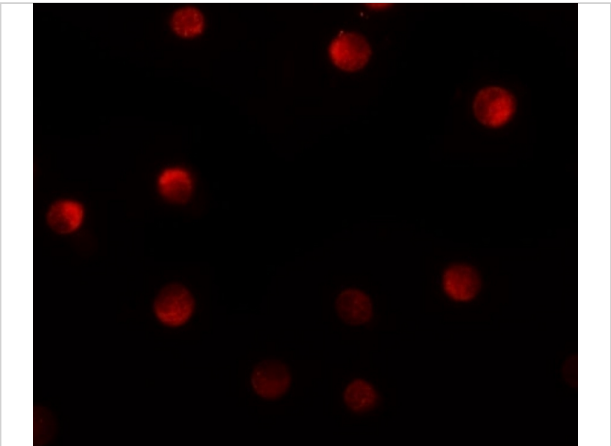
N4BP1 Antibody 1

WB Validation in Human Cell Lines Loading: 15 µg of lysates
Antibodies: N4BP1, 6175 1 µg/ml, 1 h incubation at RT in 5%
NFDm/TBST.Secondary: Goat Anti-Rabbit IgG HRP conjugate at
1:10000 dilution.E...



N4BP1 Antibody 2

Immunocytochemistry of N4BP1 in HeLa cells with N4BP1
antibody at 10 µg/mL.



N4BP1 Antibody 3

Immunofluorescence of N4BP1 in HeLa cells with N4BP1 antibody
at 20 µg/mL.

Disclaimer

Disclaimer	Optimal dilutions/concentrations should be determined by the end user. The information provided is a guideline for product use. This product is for research use only.
------------	--

For research use only. For additional information, visit ProSci's [Terms and Conditions Page](#).