



ProSci Incorporated
12170 Flint Place
Poway, CA 92064, USA
prosci-inc.com

P: +1 (888) 513-9525
Local: +1 (858) 513-2638
Fax: +1 (858) 513-2692

customercare@prosci-inc.com
techsupport@prosci-inc.com

LRRTM2 Antibody

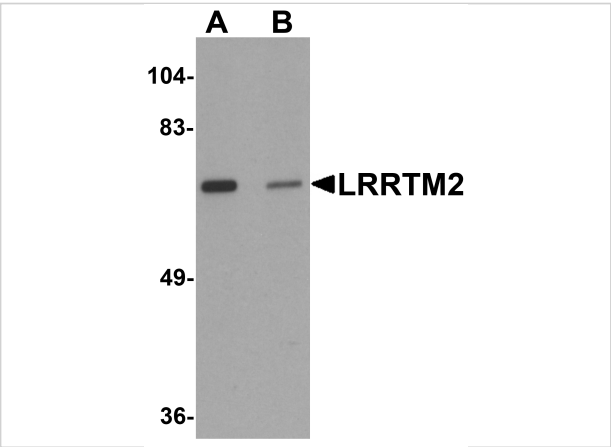
CATALOG NUMBER: 6169

Specifications

Host Species	Rabbit
Species Reactivity	Human, Mouse, Rat
Immunogen	LRRTM2 antibody was raised against a 17 amino acid synthetic peptide near the carboxy terminus of human LRRTM2. The immunogen is located within the last 50 amino acids of LRRTM2.
Conjugate	Unconjugated
Tested Applications	ELISA, IF, IHC-P, WB
User Note	Optimal dilutions for each application to be determined by the researcher.
Specificity	LRRTM2 antibody is predicted to not cross-react with other LRRTM family members.

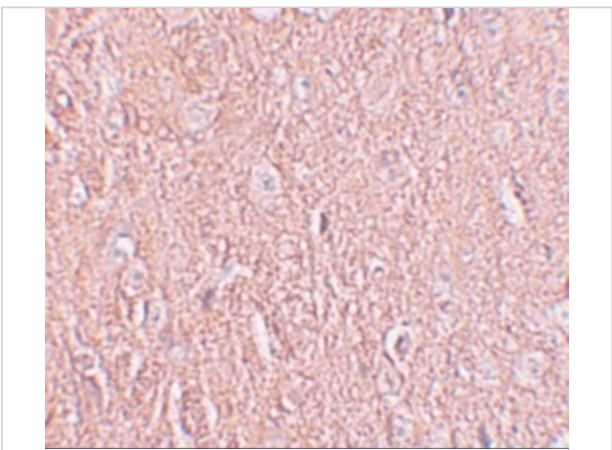
Properties

Purification	LRRTM2 Antibody is affinity chromatography purified via peptide column.
Clonality	Polyclonal
Isotype	IgG
Physical State	Liquid
Buffer	LRRTM2 Antibody is supplied in PBS containing 0.02% sodium azide.
Concentration	1 mg/mL
Storage Conditions	LRRTM2 antibody can be stored at 4°C for three months and -20°C, stable for up to one year. As with all antibodies care should be taken to avoid repeated freeze thaw cycles. Antibodies should not be exposed to prolonged high temperatures.



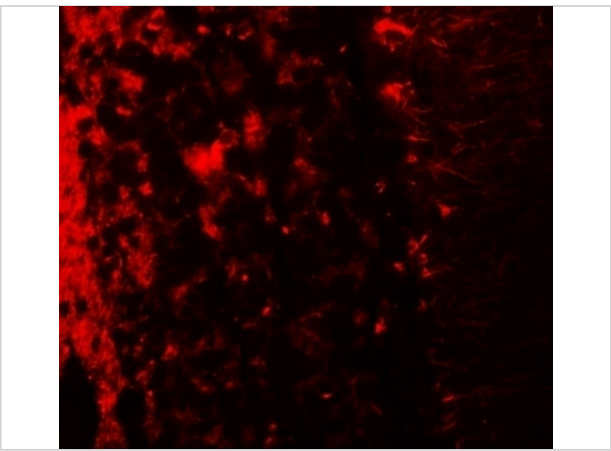
LRRTM2 Antibody 1

Western blot analysis of LRRTM2 in SK-N-SH cell lysate with LRRTM2 antibody at 1 µg/mL in (A) the absence and (B) the presence of blocking peptide.



LRRTM2 Antibody 2

Immunohistochemistry of LRRTM2 in human brain tissue with LRRTM2 antibody at 2.5 µg/mL.



LRRTM2 Antibody 3

Immunofluorescence of LRRTM2 in human brain tissue with LRRTM2 antibody at 20 µg/mL.

Disclaimer

Disclaimer	Optimal dilutions/concentrations should be determined by the end user. The information provided is a guideline for product use. This product is for research use only.
------------	--

For research use only. For additional information, visit ProSci's [Terms and Conditions Page](#).