

## LRRTM1 Antibody

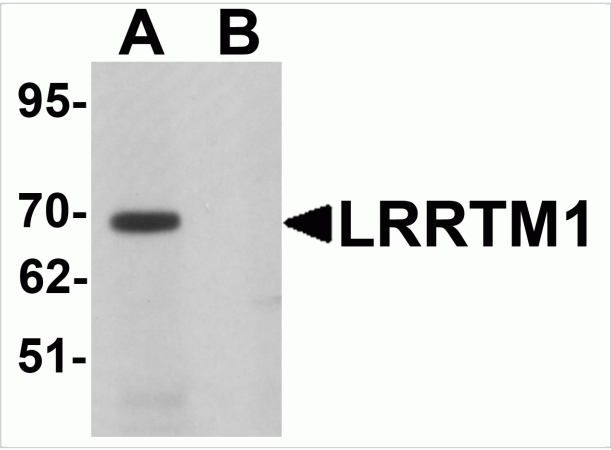
CATALOG NUMBER: 6167

### Specifications

Host Species	Rabbit
Species Reactivity	Human, Mouse, Rat
Homology	Predicted species reactivity based on immunogen sequence: Bovine: (100%)
Immunogen	LRRTM1 antibody was raised against a 17 amino acid synthetic peptide near the carboxy terminus of human LRRTM1. The immunogen is located within amino acids 450 - 500 of LRRTM1.
Conjugate	Unconjugated
Tested Applications	ELISA, IF, IHC-P, WB
User Note	Optimal dilutions for each application to be determined by the researcher.
Specificity	LRRTM1 antibody is predicted to not cross-react with other LRRTM family members.

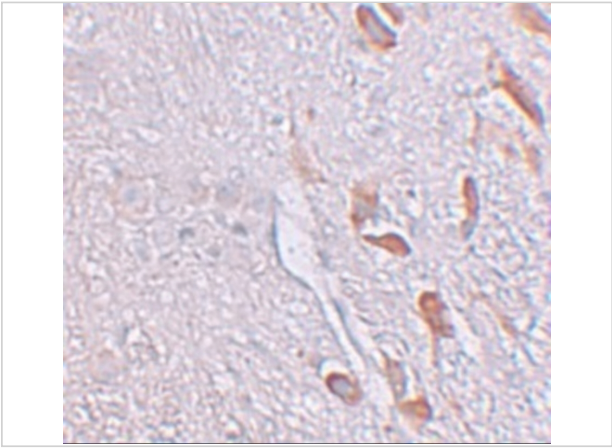
### Properties

Purification	LRRTM1 Antibody is affinity chromatography purified via peptide column.
Clonality	Polyclonal
Isotype	IgG
Physical State	Liquid
Buffer	LRRTM1 Antibody is supplied in PBS containing 0.02% sodium azide.
Concentration	1 mg/mL
Storage Conditions	LRRTM1 antibody can be stored at 4°C for three months and -20°C, stable for up to one year. As with all antibodies care should be taken to avoid repeated freeze thaw cycles. Antibodies should not be exposed to prolonged high temperatures.



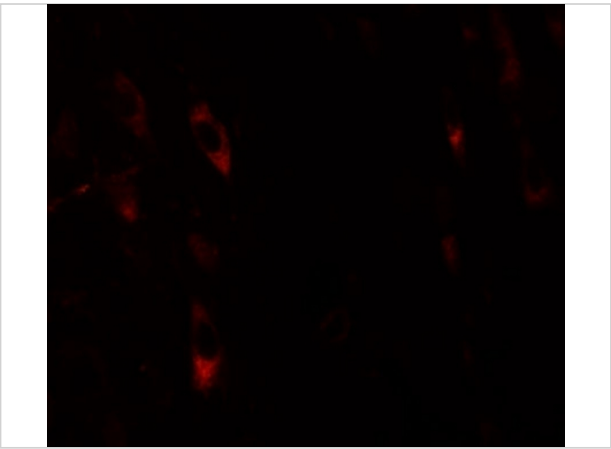
LRRTM1 Antibody 1

Western blot analysis of LRRTM1 in mouse brain tissue lysate with LRRTM1 antibody at 1 µg/mL in (A) the absence and (B) the presence of blocking peptide.



LRRTM1 Antibody 2

Immunohistochemistry of LRRTM1 in human brain tissue with LRRTM1 antibody at 5 µg/mL.



LRRTM1 Antibody 3

Immunofluorescence of LRRTM1 in human brain tissue with LRRTM1 antibody at 20 µg/mL.

Disclaimer

Disclaimer	Optimal dilutions/concentrations should be determined by the end user. The information provided is a guideline for product use. This product is for research use only.
------------	--

For research use only. For additional information, visit ProSci's [Terms and Conditions Page](#).