

ZMYM1 Antibody

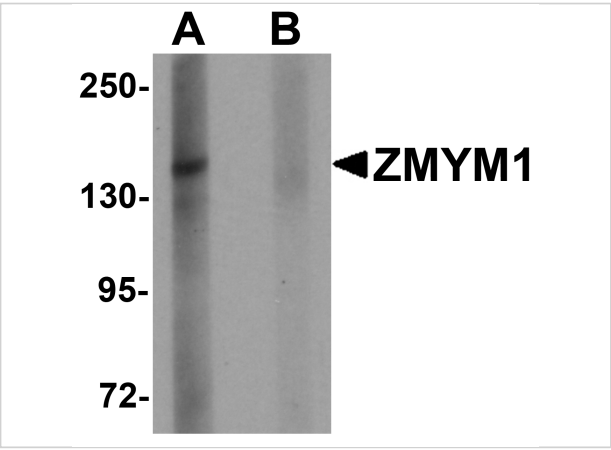
CATALOG NUMBER: 6133

Specifications

Host Species	Rabbit
Species Reactivity	Human, Mouse, Rat
Immunogen	ZMYM1 antibody was raised against a 17 amino acid synthetic peptide near the carboxy terminus of human ZMYM1 . The immunogen is located within amino acids 990 - 1040 of ZMYM1.
Conjugate	Unconjugated
Tested Applications	ELISA, IHC-P, WB
User Note	Optimal dilutions for each application to be determined by the researcher.
Specificity	At least two isoforms of ZMYM1 are known to exist; this antibody will detect only the shorter isoform. ZMYM1 antibody is predicted to not cross-react with other ZMYM protein family members.

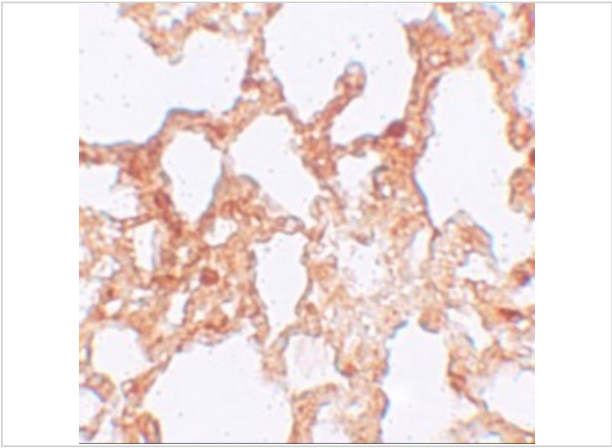
Properties

Purification	ZMYM1 Antibody is affinity chromatography purified via peptide column.
Clonality	Polyclonal
Isotype	IgG
Physical State	Liquid
Buffer	ZMYM1 Antibody is supplied in PBS containing 0.02% sodium azide.
Concentration	1 mg/mL
Storage Conditions	ZMYM1 antibody can be stored at 4°C for three months and -20°C, stable for up to one year. As with all antibodies care should be taken to avoid repeated freeze thaw cycles. Antibodies should not be exposed to prolonged high temperatures.



ZMYM1 Antibody 1

Western blot analysis of ZMYM1 in rat lung tissue lysate with ZMYM1 antibody at 1 µg/mL in (A) the absence and (B) the presence of blocking peptide.



ZMYM1 Antibody 2

Immunohistochemistry of ZMYM1 in rat lung tissue with ZMYM1 antibody at 5 µg/mL.

Disclaimer

Disclaimer	Optimal dilutions/concentrations should be determined by the end user. The information provided is a guideline for product use. This product is for research use only.
------------	--

For research use only. For additional information, visit ProSci's [Terms and Conditions Page](#).