

## ZBTB8 Antibody

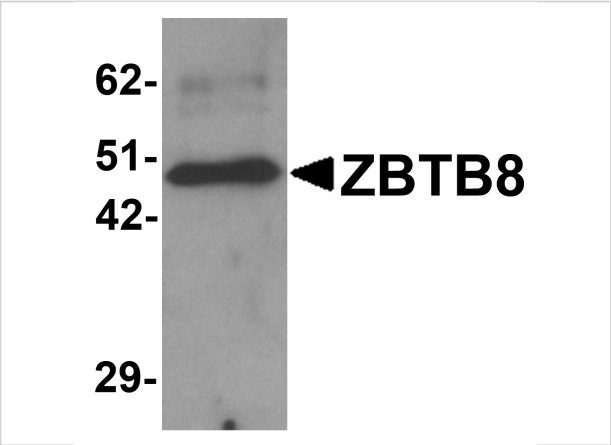
CATALOG NUMBER: 6129

### Specifications

Host Species	Rabbit
Species Reactivity	Human, Mouse
Homology	Predicted species reactivity based on immunogen sequence: Bovine: (100%), Rat: (100%)
Immunogen	ZBTB8 antibody was raised against a 17 amino acid synthetic peptide near the carboxy terminus of human ZBTB8. The immunogen is located within the last 50 amino acids of ZBTB8.
Conjugate	Unconjugated
Tested Applications	ELISA, IF, IHC-P, WB
User Note	Optimal dilutions for each application to be determined by the researcher.
Specificity	At least two isoforms of ZBTB8 are known to exist; this antibody will recognize both isoforms. This antibody is predicted to not cross-react with other ZBTB protein family members.

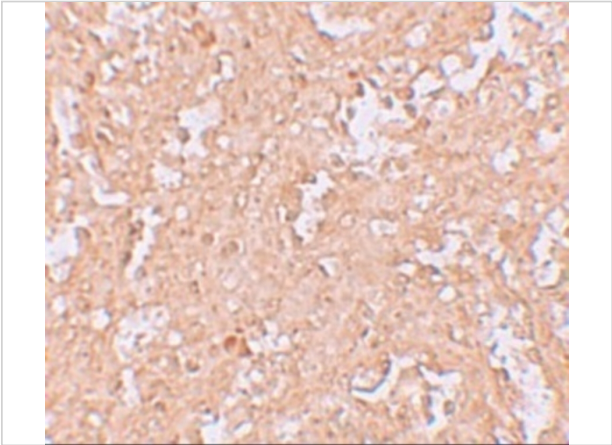
### Properties

Purification	ZBTB8 Antibody is affinity chromatography purified via peptide column.
Clonality	Polyclonal
Isotype	IgG
Physical State	Liquid
Buffer	ZBTB8 Antibody is supplied in PBS containing 0.02% sodium azide.
Concentration	1 mg/mL
Storage Conditions	ZBTB8 antibody can be stored at 4°C for three months and -20°C, stable for up to one year. As with all antibodies care should be taken to avoid repeated freeze thaw cycles. Antibodies should not be exposed to prolonged high temperatures.



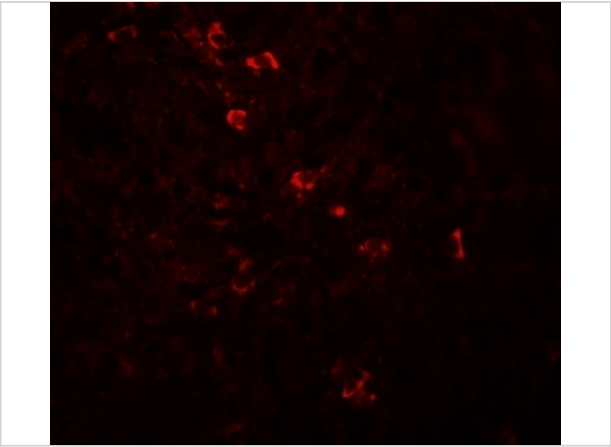
**ZBTB8 Antibody 1**

Western blot analysis of ZBTB8 in mouse spleen tissue lysate with ZBTB8 antibody at 1 µg/mL.



**ZBTB8 Antibody 2**

Immunohistochemistry of ZBTB8 in human spleen tissue with ZBTB9 antibody at 2.5 µg/mL.



**ZBTB8 Antibody 3**

Immunofluorescence of ZBTB8 in human spleen tissue with ZBTB8 antibody at 20 µg/mL.

**Disclaimer**

<b>Disclaimer</b>	Optimal dilutions/concentrations should be determined by the end user. The information provided is a guideline for product use. This product is for research use only.
-------------------	--

For research use only. For additional information, visit ProSci's [Terms and Conditions Page](#).