

ZBTB5 Antibody

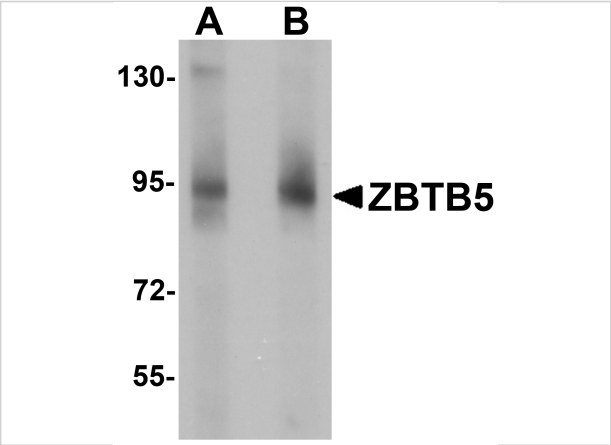
CATALOG NUMBER: 6123

Specifications

Host Species	Rabbit
Species Reactivity	Human, Mouse, Rat
Immunogen	ZBTB5 antibody was raised against a 16 amino acid synthetic peptide near the carboxy terminus of human ZBTB6. The immunogen is located within the last 50 amino acids of ZBTB5.
Conjugate	Unconjugated
Tested Applications	ELISA, IF, IHC-P, WB
User Note	Optimal dilutions for each application to be determined by the researcher.
Specificity	At least two isoforms of ZBTB5 are known to exist; this antibody will recognize both isoforms. This antibody is predicted to not cross-react with other ZBTB protein family members.

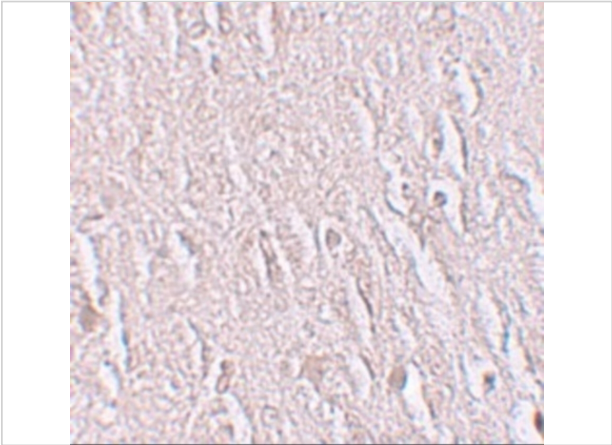
Properties

Purification	ZBTB5 Antibody is affinity chromatography purified via peptide column.
Clonality	Polyclonal
Isotype	IgG
Physical State	Liquid
Buffer	ZBTB5 Antibody is supplied in PBS containing 0.02% sodium azide.
Concentration	1 mg/mL
Storage Conditions	ZBTB5 antibody can be stored at 4°C for three months and -20°C, stable for up to one year. As with all antibodies care should be taken to avoid repeated freeze thaw cycles. Antibodies should not be exposed to prolonged high temperatures.



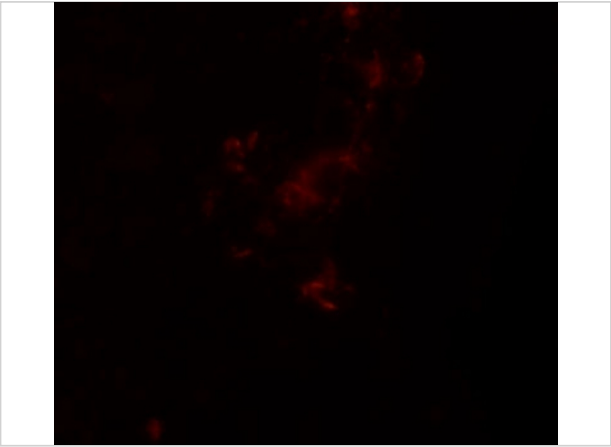
ZBTB5 Antibody 1

Western blot analysis of ZBTB5 in mouse brain tissue lysate with ZBTB5 antibody at (A) 1 and (B) 2 $\mu\text{g/mL}$.



ZBTB5 Antibody 2

Immunohistochemistry of ZBTB5 in human brain tissue with ZBTB5 antibody at 2.5 $\mu\text{g/mL}$.



ZBTB5 Antibody 3

Immunofluorescence of ZBTB5 in human brain tissue with ZBTB5 antibody at 20 $\mu\text{g/mL}$.

Disclaimer

Disclaimer	Optimal dilutions/concentrations should be determined by the end user. The information provided is a guideline for product use. This product is for research use only.
------------	--

For research use only. For additional information, visit ProSci's [Terms and Conditions Page](#).