

## WIZ Antibody

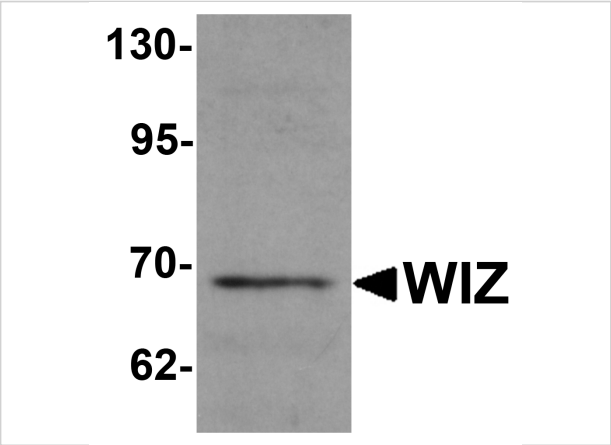
CATALOG NUMBER: 6117

### Specifications

Host Species	Rabbit
Species Reactivity	Human, Mouse, Rat
Immunogen	WIZ antibody was raised against a 17 amino acid synthetic peptide near the carboxy terminus of human TFF3. The immunogen is located within the last 50 amino acids of WIZ.
Conjugate	Unconjugated
Tested Applications	ELISA, IF, IHC-P, WB
User Note	Optimal dilutions for each application to be determined by the researcher.
Specificity	At least four isoforms of WIZ are known to exist; this antibody will detect all four.

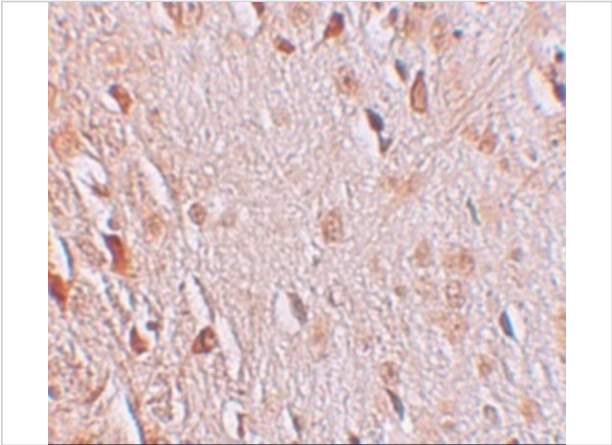
### Properties

Purification	WIZ Antibody is affinity chromatography purified via peptide column.
Clonality	Polyclonal
Isotype	IgG
Physical State	Liquid
Buffer	WIZ Antibody is supplied in PBS containing 0.02% sodium azide.
Concentration	1 mg/mL
Storage Conditions	WIZ antibody can be stored at 4°C for three months and -20°C, stable for up to one year. As with all antibodies care should be taken to avoid repeated freeze thaw cycles. Antibodies should not be exposed to prolonged high temperatures.



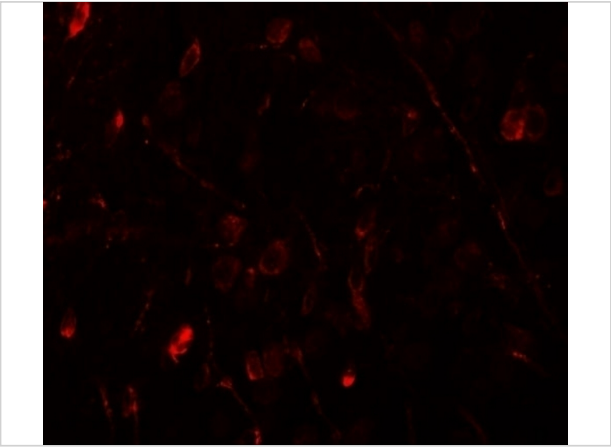
WIZ Antibody 1

Western blot analysis of WIZ in rat lung tissue lysate with WIZ antibody at 1 µg/mL.



WIZ Antibody 2

Immunohistochemistry of WIZ in human brain tissue with WIZ antibody at 2.5 µg/mL.



WIZ Antibody 3

Immunofluorescence of WIZ in human brain tissue with WIZ antibody at 20 µg/mL.

Disclaimer

Disclaimer	Optimal dilutions/concentrations should be determined by the end user. The information provided is a guideline for product use. This product is for research use only.
------------	--

For research use only. For additional information, visit ProSci's [Terms and Conditions Page](#).