

CXXC5 Antibody

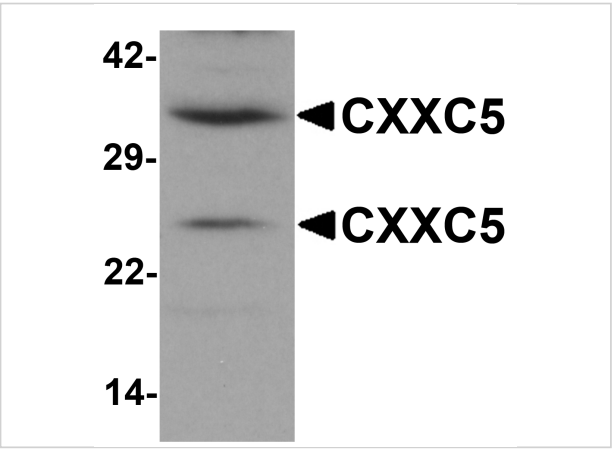
CATALOG NUMBER: 6111

Specifications

Host Species	Rabbit
Species Reactivity	Human, Mouse, Rat
Homology	Predicted species reactivity based on immunogen sequence: Bovine: (100%)
Immunogen	CXXC5 antibody was raised against a 15 amino acid synthetic peptide near the amino terminus of human CXXC5. The immunogen is located within amino acids 30 - 80 of CXXC5.
Conjugate	Unconjugated
Tested Applications	ELISA, IF, IHC-P, WB
User Note	Optimal dilutions for each application to be determined by the researcher.
Specificity	At least two isoforms of CXXC5 are known to exist. CXXC5 antibody is predicted to not cross-react with other CXXC protein family members.
Predicted Molecular Weight	Predicted: 25, 35 kDa Observed: 25, 35 kDa

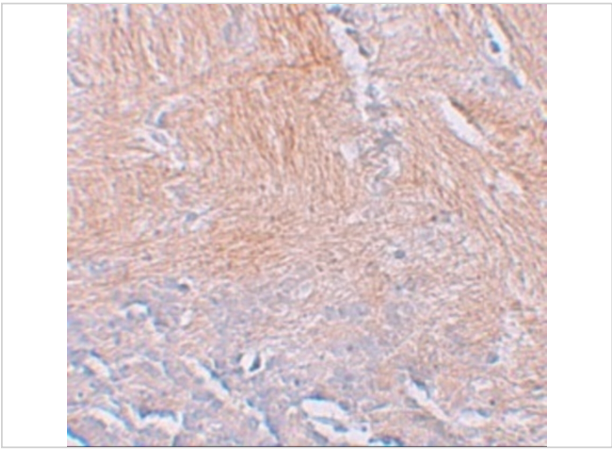
Properties

Purification	CXXC5 Antibody is affinity chromatography purified via peptide column.
Clonality	Polyclonal
Isotype	IgG
Physical State	Liquid
Buffer	CXXC5 Antibody is supplied in PBS containing 0.02% sodium azide.
Concentration	1 mg/mL
Storage Conditions	CXXC5 antibody can be stored at 4°C for three months and -20°C, stable for up to one year. As with all antibodies care should be taken to avoid repeated freeze thaw cycles. Antibodies should not be exposed to prolonged high temperatures.



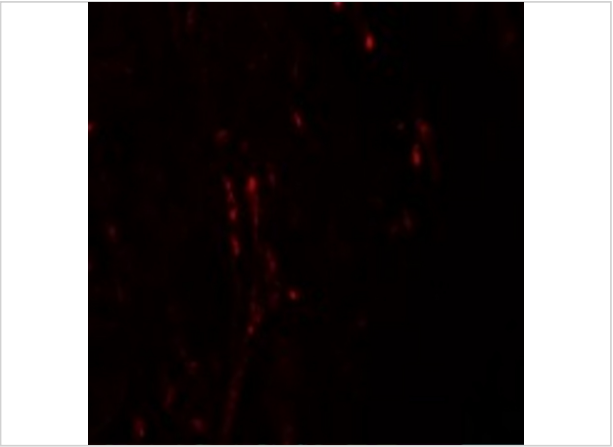
CXXC5 Antibody 1

Western blot analysis of CXXC5 in human brain tissue lysate with CXXC5 antibody at 1 µg/mL.



CXXC5 Antibody 2

Immunohistochemistry of CXXC5 in human brain tissue with CXXC5 antibody at 2.5 µg/mL.



CXXC5 Antibody 3

Immunofluorescence of CXXC5 in Human Brain tissue with CXXC5 antibody at 20 µg/mL.

Disclaimer

Disclaimer	Optimal dilutions/concentrations should be determined by the end user. The information provided is a guideline for product use. This product is for research use only.
------------	--

For research use only. For additional information, visit ProSci's [Terms and Conditions Page](#).