

ZIP13 Antibody

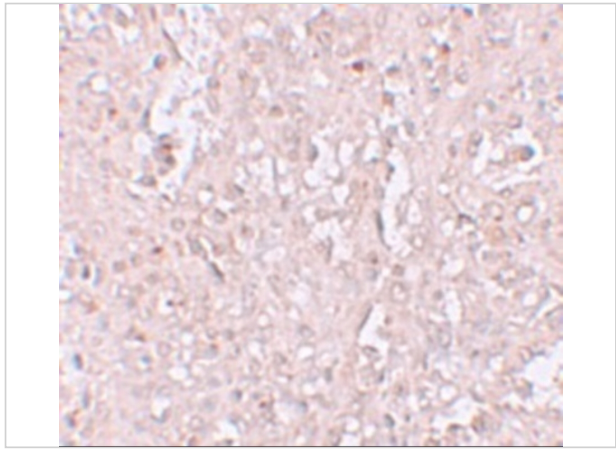
CATALOG NUMBER: 6103

Specifications

Host Species	Rabbit
Species Reactivity	Human
Immunogen	ZIP13 antibody was raised against a 14 amino acid synthetic peptide near the amino terminus of human ZIP13. The immunogen is located within amino acids 150 - 200 of ZIP13.
Conjugate	Unconjugated
Tested Applications	ELISA, IF, IHC-P
User Note	Optimal dilutions for each application to be determined by the researcher.
Specificity	At least two isoforms of ZIP13 are known to exist; this antibody will detect both isoforms. ZIP13 antibody is predicted to not cross-react with other ZIP family members.

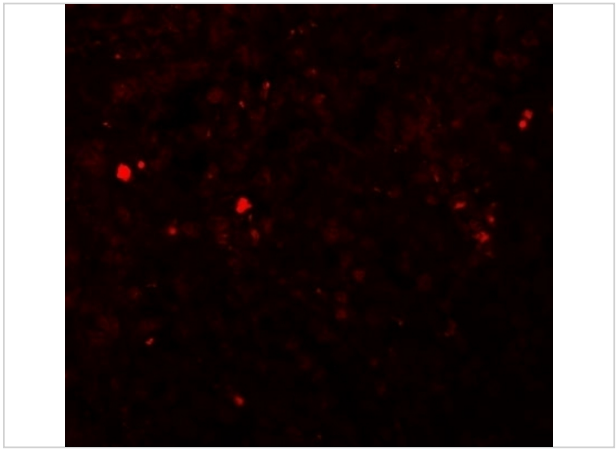
Properties

Purification	ZIP13 Antibody is affinity chromatography purified via peptide column.
Clonality	Polyclonal
Isotype	IgG
Physical State	Liquid
Buffer	ZIP13 Antibody is supplied in PBS containing 0.02% sodium azide.
Concentration	1 mg/mL
Storage Conditions	ZIP13 antibody can be stored at 4°C for three months and -20°C, stable for up to one year. As with all antibodies care should be taken to avoid repeated freeze thaw cycles. Antibodies should not be exposed to prolonged high temperatures.



ZIP13 Antibody 2

Immunohistochemistry of ZIP13 in human spleen tissue with ZIP13 antibody at 2.5 µg/mL.



ZIP13 Antibody 3

Immunofluorescence of ZIP13 in human spleen tissue with ZIP13 antibody at 20 µg/mL.

Disclaimer

Disclaimer	Optimal dilutions/concentrations should be determined by the end user. The information provided is a guideline for product use. This product is for research use only.
------------	--

For research use only. For additional information, visit ProSci's [Terms and Conditions Page](#).