

## ZIP6 Antibody

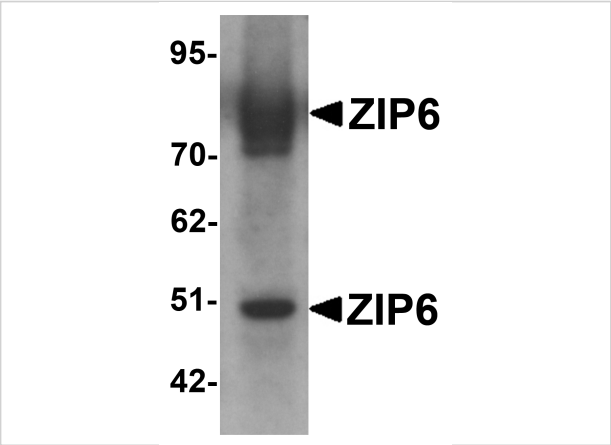
CATALOG NUMBER: 6091

### Specifications

Host Species	Rabbit
Species Reactivity	Human, Mouse
Immunogen	ZIP6 antibody was raised against a 16 amino acid synthetic peptide near the center of human ZIP6. The immunogen is located within amino acids 430 - 480 of ZIP6.
Conjugate	Unconjugated
Tested Applications	ELISA, IF, IHC-P, WB
User Note	Optimal dilutions for each application to be determined by the researcher.

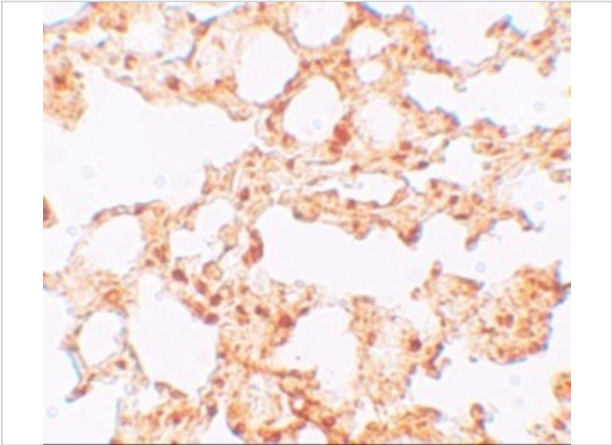
### Properties

Purification	ZIP6 Antibody is affinity chromatography purified via peptide column.
Clonality	Polyclonal
Isotype	IgG
Physical State	Liquid
Buffer	ZIP6 Antibody is supplied in PBS containing 0.02% sodium azide.
Concentration	1 mg/mL
Storage Conditions	ZIP6 antibody can be stored at 4°C for three months and -20°C, stable for up to one year. As with all antibodies care should be taken to avoid repeated freeze thaw cycles. Antibodies should not be exposed to prolonged high temperatures.



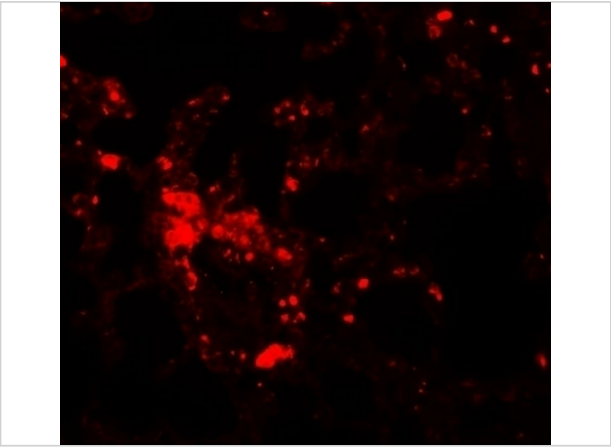
ZIP6 Antibody 1

Western blot analysis of ZIP6 in mouse lung tissue lysate with ZIP6 antibody at 1 µg/mL.



ZIP6 Antibody 2

Immunohistochemistry of ZIP6 in mouse lung tissue with ZIP6 antibody at 5 µg/mL.



ZIP6 Antibody 3

Immunofluorescence of ZIP6 in mouse lung tissue with ZIP6 antibody at 20 µg/mL.

Disclaimer

Disclaimer	Optimal dilutions/concentrations should be determined by the end user. The information provided is a guideline for product use. This product is for research use only.
------------	--

For research use only. For additional information, visit ProSci's [Terms and Conditions Page](#).