

ZIP2 Antibody

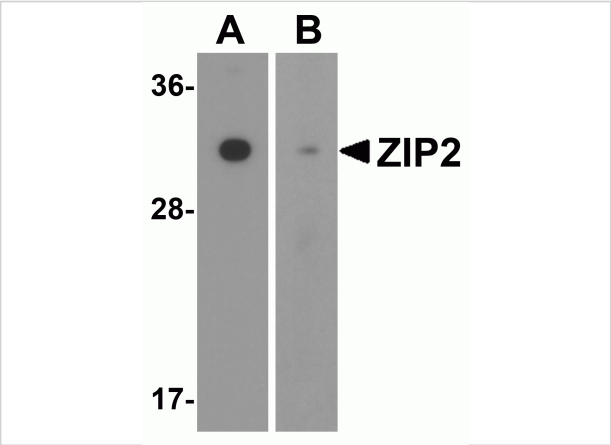
CATALOG NUMBER: 6083

Specifications

Host Species	Rabbit
Species Reactivity	Human, Mouse, Rat
Immunogen	ZIP2 antibody was raised against a 17 amino acid synthetic peptide near the amino terminus of human ZIP2. The immunogen is located within amino acids 70 - 120 of ZIP2.
Conjugate	Unconjugated
Tested Applications	ELISA, IF, IHC-P, WB
User Note	Optimal dilutions for each application to be determined by the researcher.
Predicted Molecular Weight	Predicted: 34kDa Observed: 32 kDa

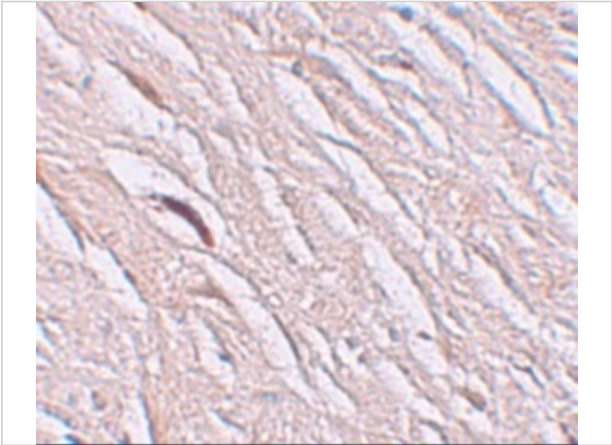
Properties

Purification	ZIP2 Antibody is affinity chromatography purified via peptide column.
Clonality	Polyclonal
Isotype	IgG
Physical State	Liquid
Buffer	ZIP2 Antibody is supplied in PBS containing 0.02% sodium azide.
Concentration	1 mg/mL
Storage Conditions	ZIP2 antibody can be stored at 4°C for three months and -20°C, stable for up to one year. As with all antibodies care should be taken to avoid repeated freeze thaw cycles. Antibodies should not be exposed to prolonged high temperatures.



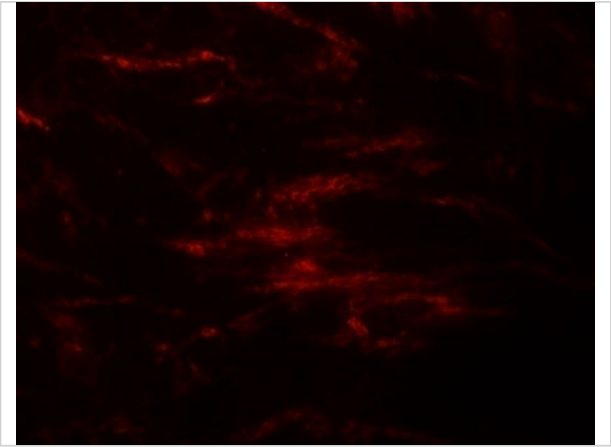
ZIP2 Antibody 1

Western blot analysis of ZIP2 in (A) mouse and (B) rat brain tissue lysate with ZIP2 antibody at 1 µg/mL.



ZIP2 Antibody 2

Immunohistochemistry of ZIP2 in human brain tissue with ZIP2 antibody at 2.5 µg/mL.



ZIP2 Antibody 3

Immunofluorescence of ZIP2 in human brain tissue with ZIP2 antibody at 20 µg/mL.

Disclaimer

Disclaimer	Optimal dilutions/concentrations should be determined by the end user. The information provided is a guideline for product use. This product is for research use only.
------------	--

For research use only. For additional information, visit ProSci's [Terms and Conditions Page](#).