

ZNF521 Antibody

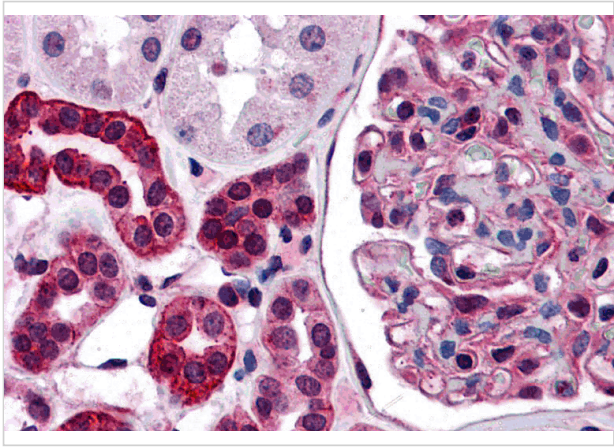
CATALOG NUMBER: 6065

Specifications

Host Species	Rabbit
Species Reactivity	Human
Homology	Predicted species reactivity based on immunogen sequence: Mouse: (100%)
Immunogen	ZNF521 antibody was raised against a 19 amino acid synthetic peptide near the carboxy terminus of human ZNF521. The immunogen is located within amino acids 1160 - 1210 of ZNF521.
Conjugate	Unconjugated
Tested Applications	ELISA, IHC-P
User Note	Optimal dilutions for each application to be determined by the researcher.
Specificity	ZNF521 antibody is human specific.

Properties

Purification	ZNF521 Antibody is affinity chromatography purified via peptide column.
Clonality	Polyclonal
Isotype	IgG
Physical State	Liquid
Buffer	ZNF521 Antibody is supplied in PBS containing 0.02% sodium azide.
Concentration	1 mg/mL
Storage Conditions	ZNF521 antibody can be stored at 4°C for three months and -20°C, stable for up to one year. As with all antibodies care should be taken to avoid repeated freeze thaw cycles. Antibodies should not be exposed to prolonged high temperatures.



ZNF521 Antibody 1

Immunohistochemistry of ZNF521 in human kidney tissue with ZNF521 antibody at 5 µg/mL.

Disclaimer

Disclaimer	Optimal dilutions/concentrations should be determined by the end user. The information provided is a guideline for product use. This product is for research use only.
------------	--

For research use only. For additional information, visit ProSci's [Terms and Conditions Page](#).