

CXXC4 Antibody

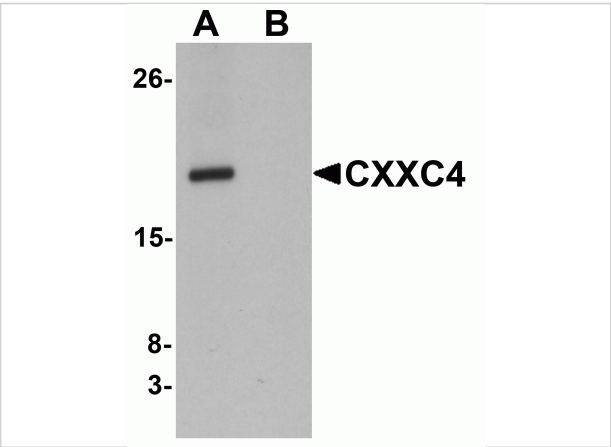
CATALOG NUMBER: 6041

Specifications

Host Species	Rabbit
Species Reactivity	Human, Mouse, Rat
Immunogen	CXXC4 antibody was raised against an 18 amino acid synthetic peptide near the amino terminus of human CXXC4. The immunogen is located within amino acids 50 - 100 of CXXC4.
Conjugate	Unconjugated
Tested Applications	ELISA, IF, IHC-P, WB
User Note	Optimal dilutions for each application to be determined by the researcher.

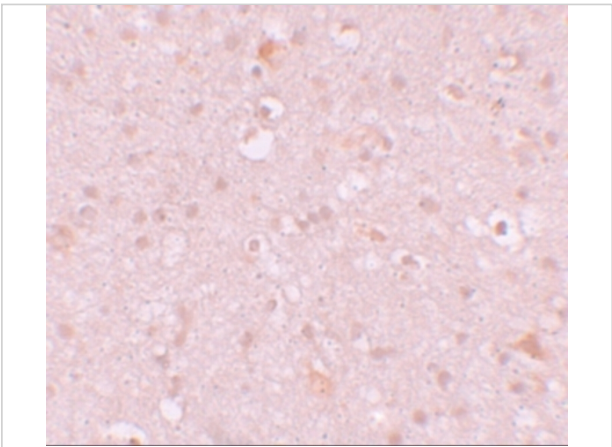
Properties

Purification	CXXC4 Antibody is affinity chromatography purified via peptide column.
Clonality	Polyclonal
Isotype	IgG
Physical State	Liquid
Buffer	CXXC4 Antibody is supplied in PBS containing 0.02% sodium azide.
Concentration	1 mg/mL
Storage Conditions	CXXC4 antibody can be stored at 4°C for three months and -20°C, stable for up to one year. As with all antibodies care should be taken to avoid repeated freeze thaw cycles. Antibodies should not be exposed to prolonged high temperatures.



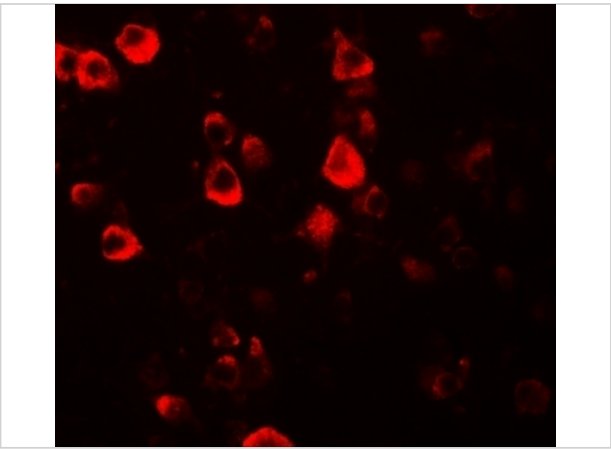
CXXC4 Antibody 1

Western blot analysis of CXXC4 in human brain tissue lysate with CXXC4 antibody at 1 µg/mL in (A) the absence and (B) the presence of blocking peptide.



CXXC4 Antibody 2

Immunohistochemistry of CXXC4 in human brain tissue with CXXC4 antibody at 10 µg/mL.



CXXC4 Antibody 3

Immunofluorescence of CXXC4 in human brain tissue with CXXC4 antibody at 20 µg/mL.

Disclaimer

Disclaimer	Optimal dilutions/concentrations should be determined by the end user. The information provided is a guideline for product use. This product is for research use only.
------------	--

For research use only. For additional information, visit ProSci's [Terms and Conditions Page](#).