

APBA2 Antibody

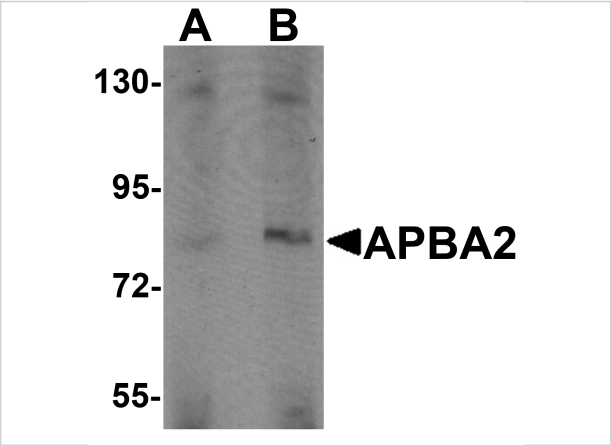
CATALOG NUMBER: 6039

Specifications

Host Species	Rabbit
Species Reactivity	Human
Homology	Predicted species reactivity based on immunogen sequence: Mouse: (78%), Rat: (78%)
Immunogen	APBA2 antibody was raised against an 18 amino acid synthetic peptide near the center of human APBA2. The immunogen is located within amino acids 290 - 340 of APBA2.
Conjugate	Unconjugated
Tested Applications	ELISA, IF, IHC-P, WB
User Note	Optimal dilutions for each application to be determined by the researcher.

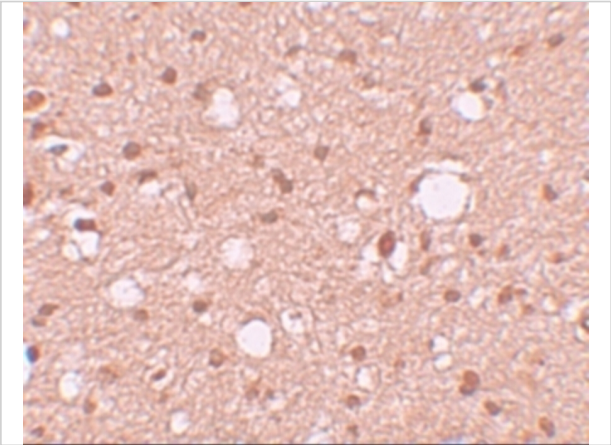
Properties

Purification	APBA2 Antibody is affinity chromatography purified via peptide column.
Clonality	Polyclonal
Isotype	IgG
Physical State	Liquid
Buffer	APBA2 Antibody is supplied in PBS containing 0.02% sodium azide.
Concentration	1 mg/mL
Storage Conditions	APBA2 antibody can be stored at 4°C for three months and -20°C, stable for up to one year. As with all antibodies care should be taken to avoid repeated freeze thaw cycles. Antibodies should not be exposed to prolonged high temperatures.



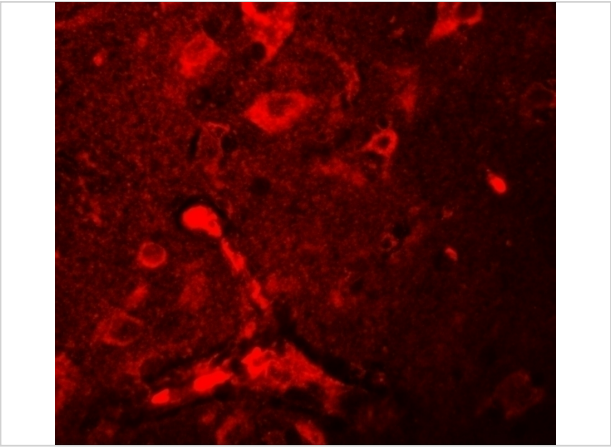
APBA2 Antibody 1

Western blot analysis of APBA2 in human brain tissue lysate with APBA2 antibody at (A) 1 and (B) 2 µg/mL.



APBA2 Antibody 2

Immunohistochemistry of APBA2 in human brain tissue with APBA2 antibody at 10 µg/mL.



APBA2 Antibody 3

Immunofluorescence of APBA2 in human brain tissue with APBA2 antibody at 20 µg/mL.

Disclaimer

Disclaimer	Optimal dilutions/concentrations should be determined by the end user. The information provided is a guideline for product use. This product is for research use only.
------------	--

For research use only. For additional information, visit ProSci's [Terms and Conditions Page](#).